

# Hall A Winter Collaboration Meeting

## January 21<sup>st</sup> - 22<sup>nd</sup> 2026

# Welcome

Indico page:

<https://indico.jlab.org/event/994/>

In person in CC F113 or Virtual on zoom:

<https://jlab-org.zoomgov.com/j/1606682674?pwd=6Xgihu8WAp17qEbtyJmRpj6VhEJR1.1#success>

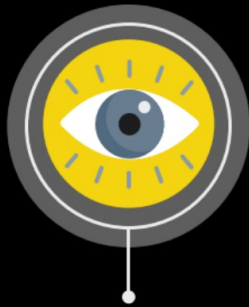
# Program

---

- Wednesday morning:
  - Introductory session
    - ◆ Hall, Accelerator, Director updates;
    - ◆ Business meeting;
  - Pr Jens Erler: *Scientific impact of the MOLLER and P2 experiment*
- Wednesday afternoon:
  - Moller session
- Thursday morning:
  - SBS session
- Thursday afternoon:
  - Pr Kate Scholberg: *Neutrino Measurements and Their Connection to JLab Electron Beam Measurements*
  - SoLID session



## IN CASE OF AN EMERGENCY – F113



### **Locate the Nearest Exit**

There are two doors located at the back of F113



### **Exit the Building for Fire**

After exiting the room, find the nearest exterior door to exit the building



### **Shelter Inside for Tornado**

Stay in F113, or the F-wing hallway for tornado or severe weather



### **Wait for Further Direction**

JLab Security or representative will let you know when safe to resume

# Community Standards

Everyone at Jefferson Lab has a responsibility to foster an environment where all employees, users, students, guests, visitors and subcontractors feel welcome and supported in advancing the lab's mission.

We'd like to take a moment to familiarize you with our Community Standards. Jefferson Lab actively promotes a harassment-free experience for all.

Everyone is expected to model professionalism and respectful behavior at all times. Failure to adhere to these Community Standards may result in being barred from further lab events; suspension of site access, including housing at the SURA residence facility; and/or removal from the site.

While it is not possible to provide a complete list of the types of improper behavior below, prohibited conduct includes, but is not limited to:

- Obscene or abusive language
- Bullying or deliberate intimidation
- Disrespectful or offensive comments/gestures
- Displaying or circulating sexually suggestive materials
- Inappropriate physical contact
- Stalking/following
- Unwelcome sexual attention or advances
- Violating security or environment, safety and health rules

If you or someone else feels uncomfortable in the workplace, or if you believe you have been subjected to a hostile or harassing environment or have any related concerns, please contact the Jefferson Lab Ethics Officer, Rhonda Barbosa, immediately at [rbarbosa@jlab.org](mailto:rbarbosa@jlab.org) or via the Lab's Ethics Hotline at [jsaecp.ethicspoint.com](http://jsaecp.ethicspoint.com). Alternately, you may contact your sponsor.

