

# Accelerator Status & Experiment Schedule

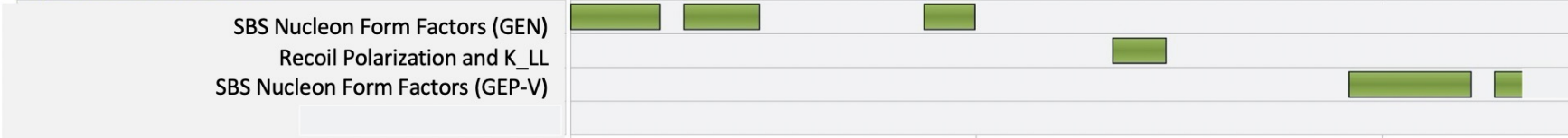
Douglas Higinbotham

Physics Division

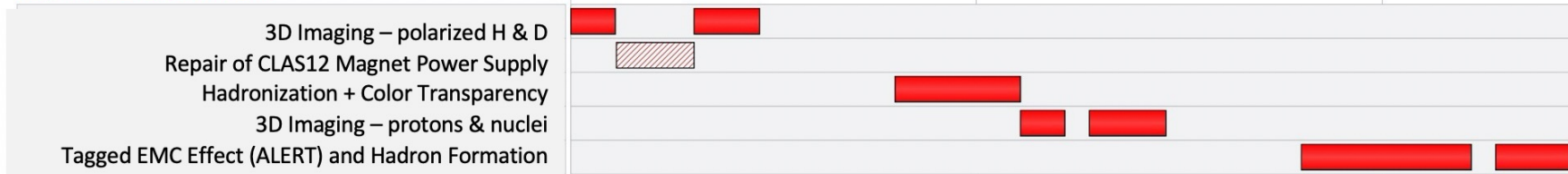
# CEBAF Improvement Plan Is Proceeding

- Last run period, we pushed the CEBAF accelerator to 1047 MeV/linac
  - A good energy for delivering high polarization to Halls A, B and C
  - This equates to 10.5 GeV for A, B, C and 11.6 GeV for Hall D
- And we ran at that energy the entire 32 weeks of physics beam!
  - Down side was limited beam current and high trip rates
- During this SAD (scheduling accelerator down) we have added a C100 to the north linac and replaced one in the south linac.
  - We are planning to cont. with the 1047 MeV/linac with what should be more stable beam.
  - We have had a series of safety pauses which have caused a short term delay, but hopefully will mean smoother & safer long term running.
- Looking ahead the goal is to get CEBAF well into the operational energy range needed for the MOLLER experiment (10.6 to 11 GeV for Hall A)

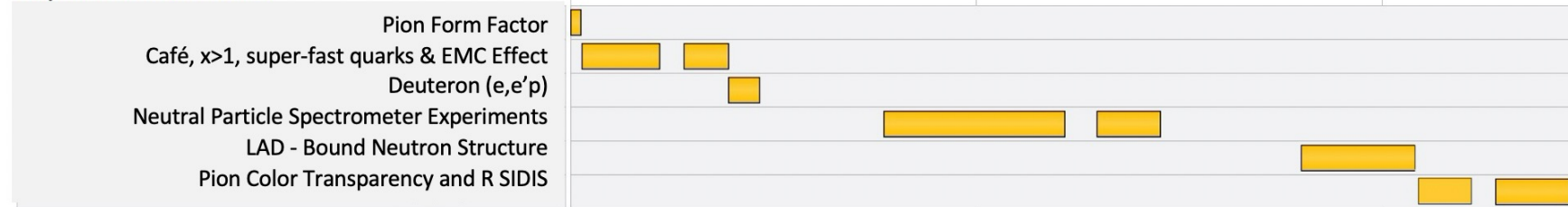
### Experimental Hall A



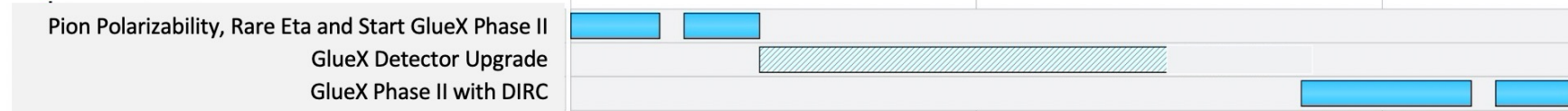
### Experimental Hall B



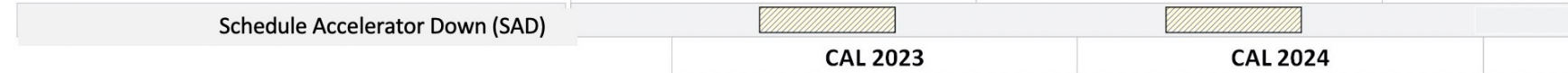
### Experimental Hall C



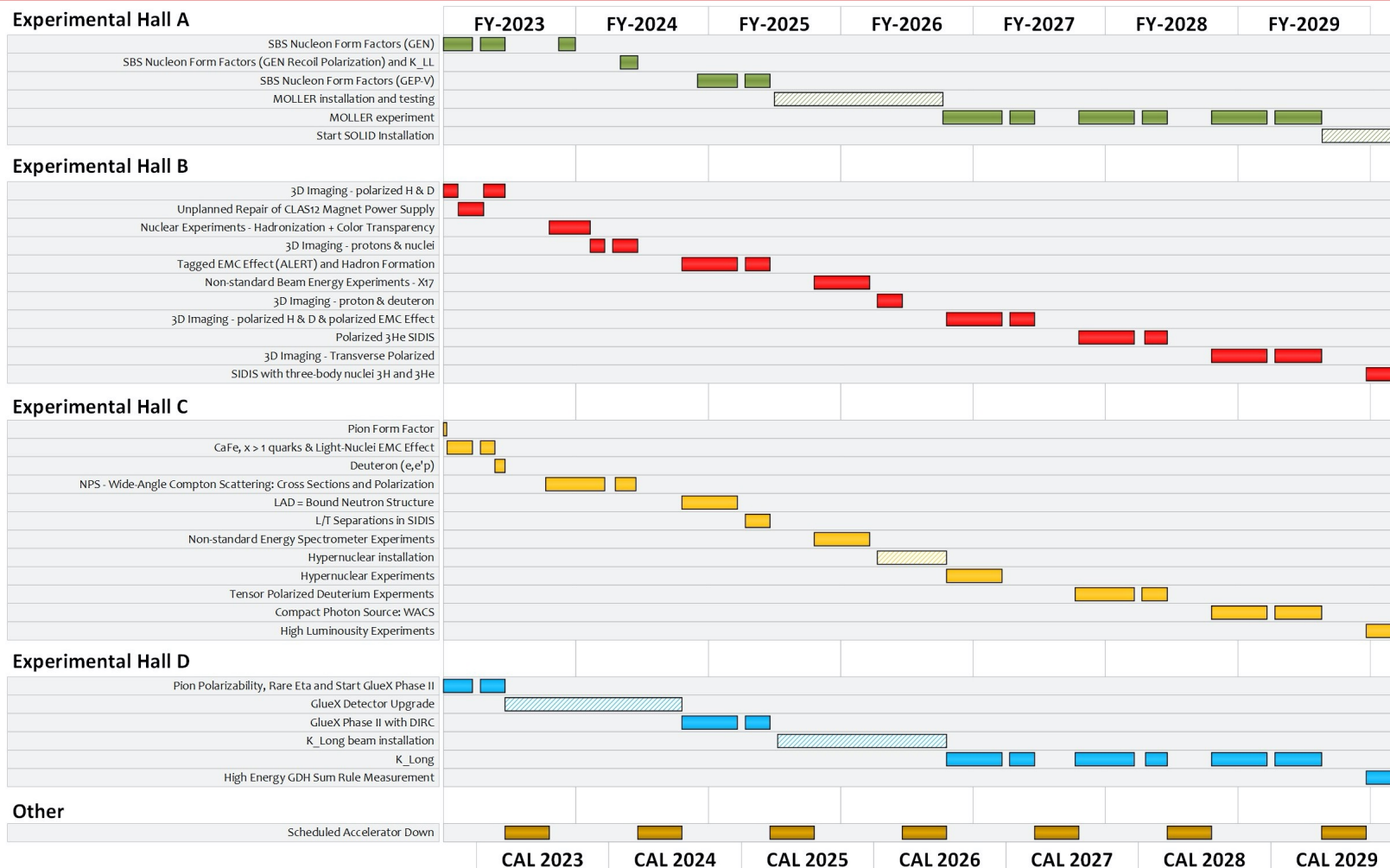
### Experimental Hall D



### Other



# EXTENDED EXPERIMENTAL SCHEDULE



205 completed experiments to-date (28 full; 28 partial in 12 GeV era)

51 experiments remaining

~7 years at ~30 weeks/year

...not including SoLID

...not including new proposals