

SAD 2020

SBS Installation Plan.

Jessie Butler
Hall A Work Coordinator

Tuesday, July 14, 2020



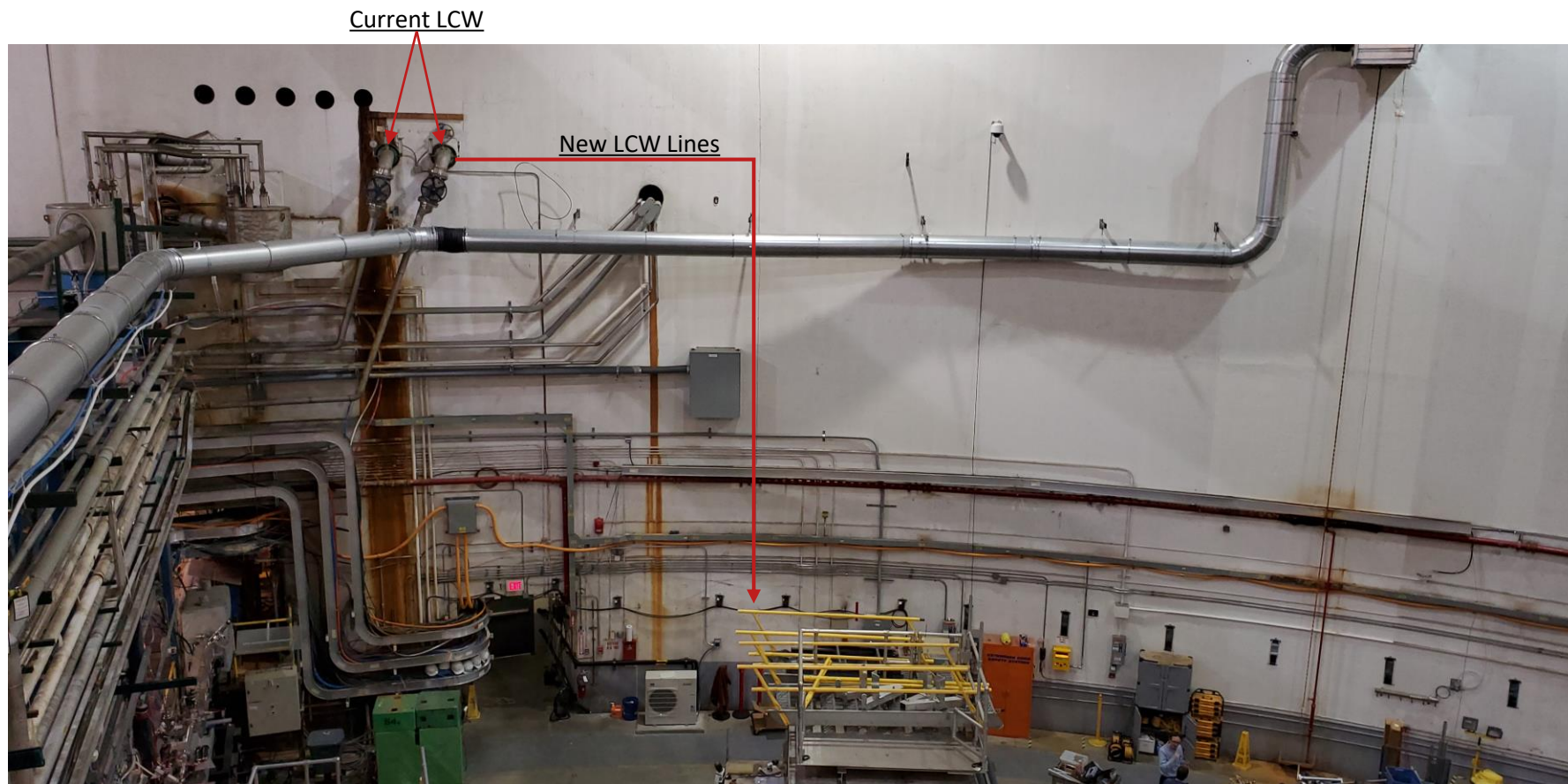
Objectives: SAD 2020

- Remove PREX/CREX Equipment.
- Upgrade LCW System.
- Assemble SBS Equipment.
- Decommission RHRS.
- FML Work List.
- Current Work.
- Installation Schedule.

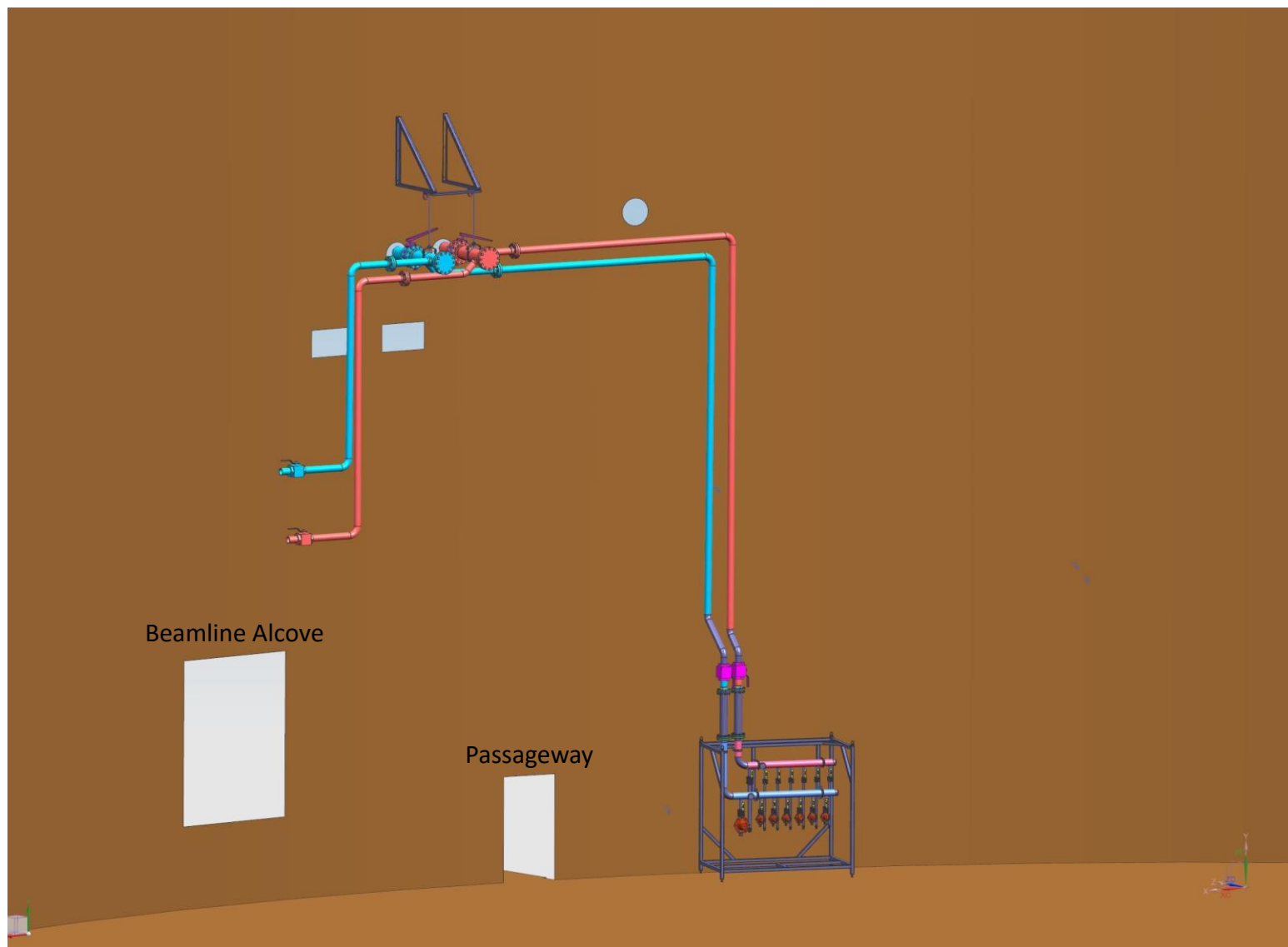
Current Hall Configuration (PREX-II/CREX)



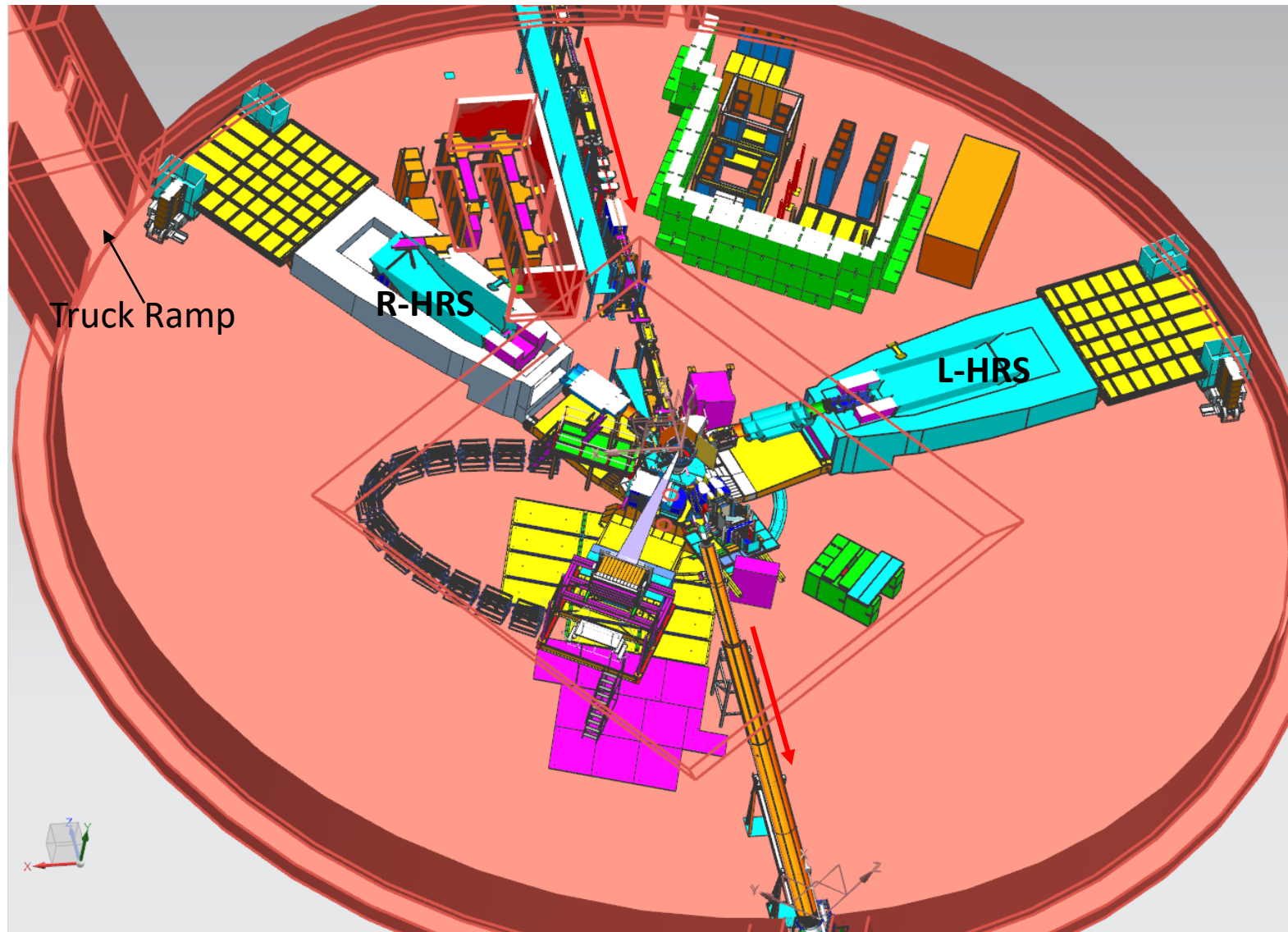
LCW Upgrade



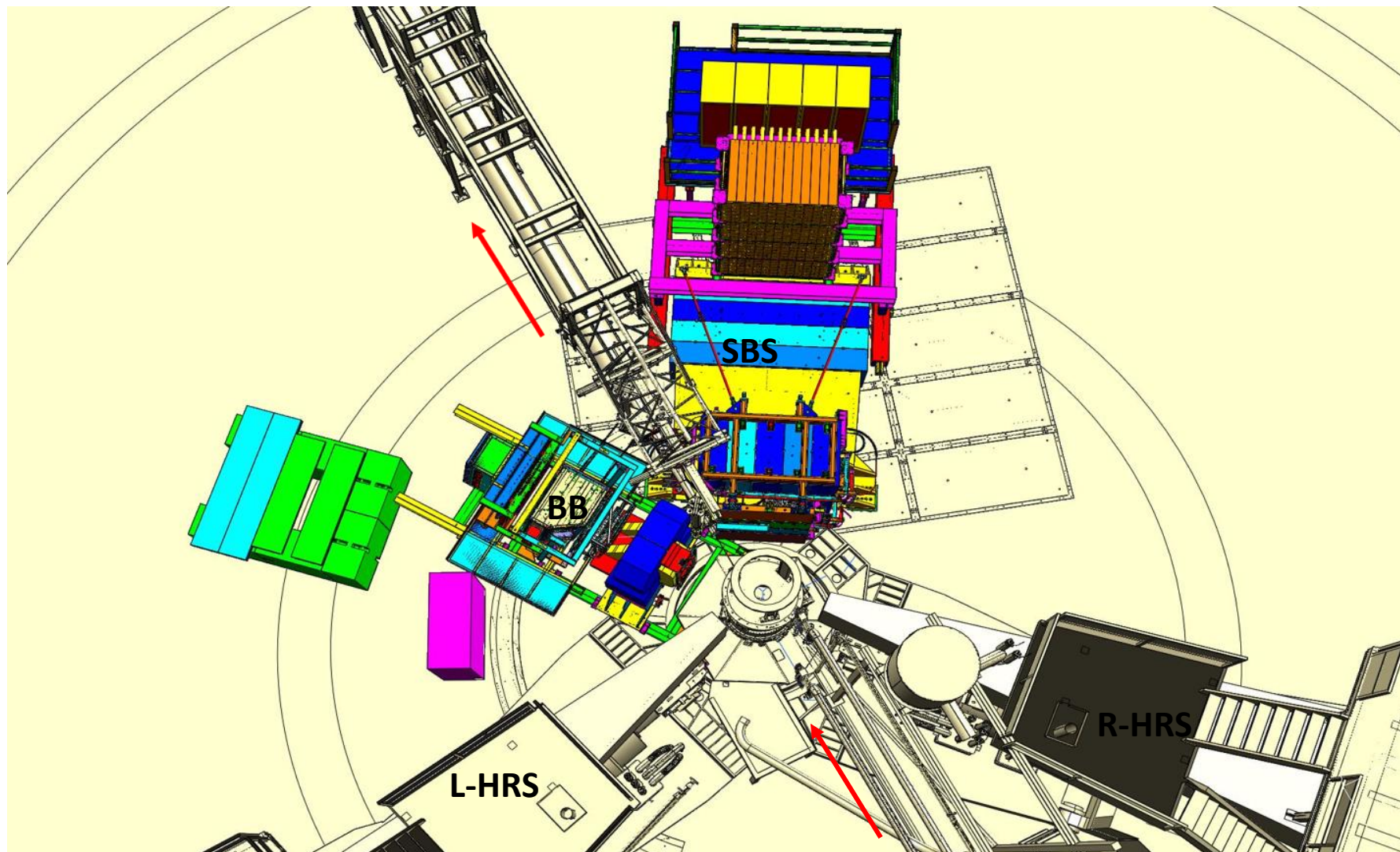
LCW Upgrade (cont.)



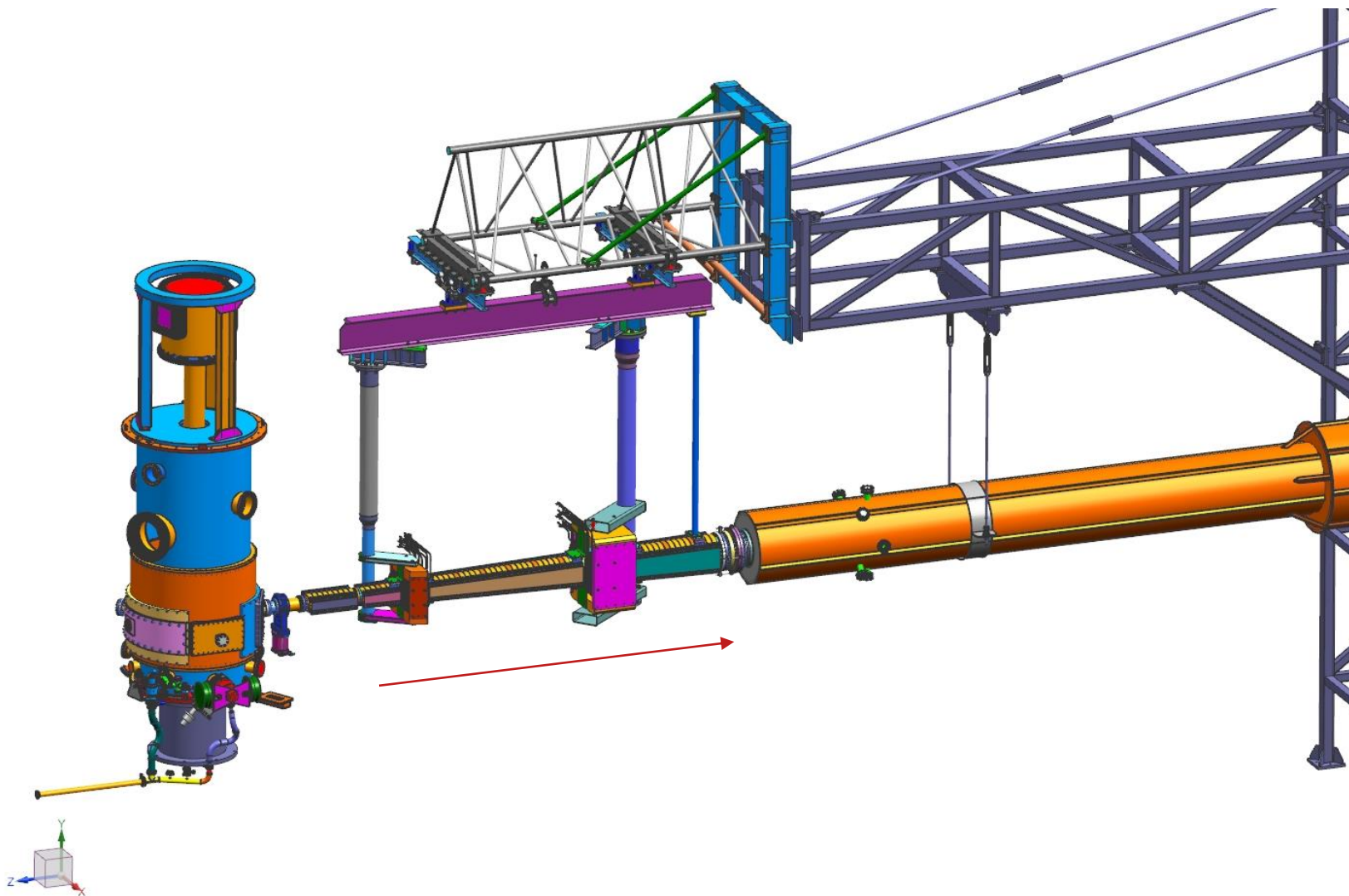
SBS Equipment



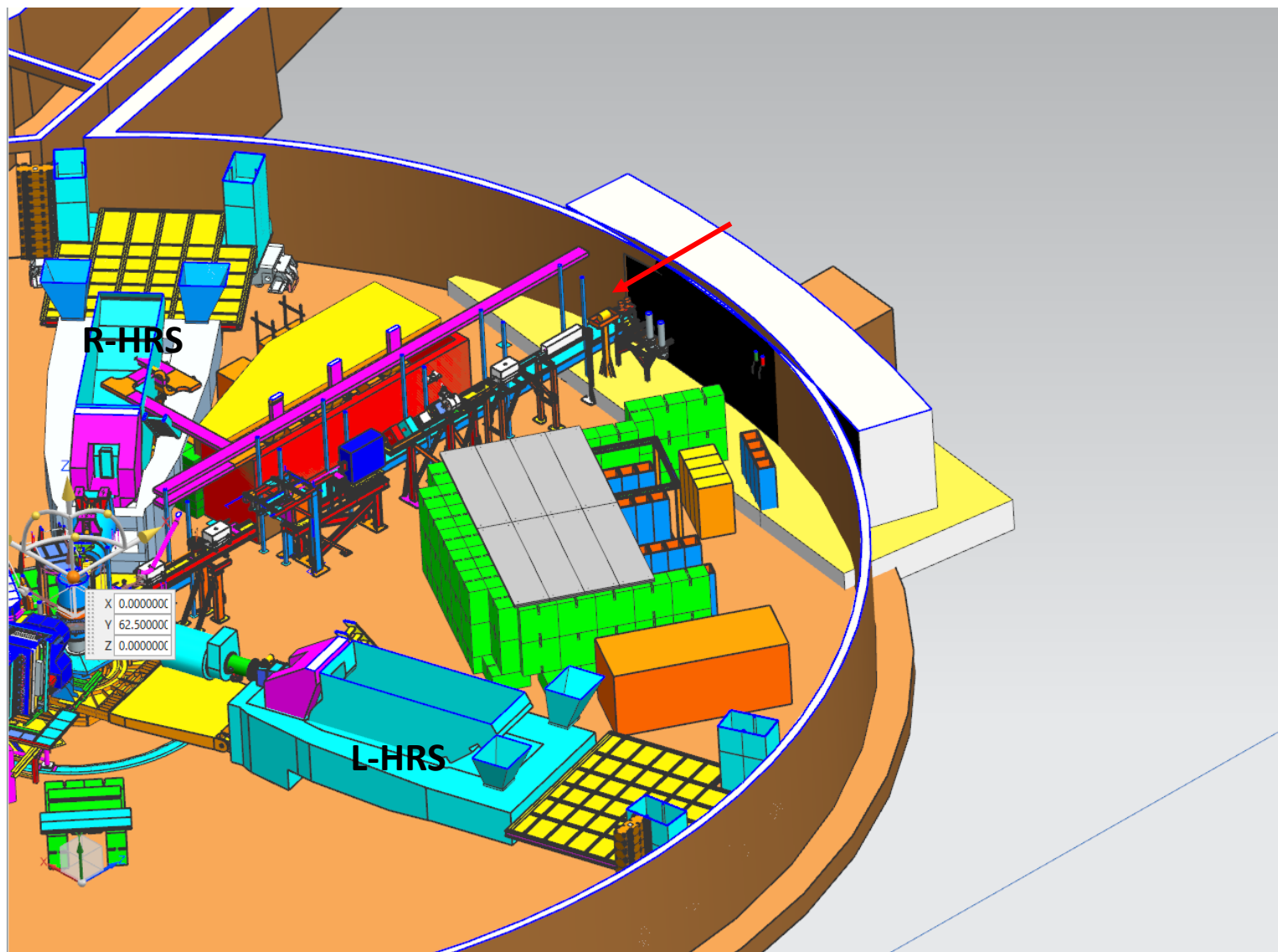
SBS Equipment (cont.)



Chamber, Tower, & Downstream Beamline



Upstream Electronics' Bunker



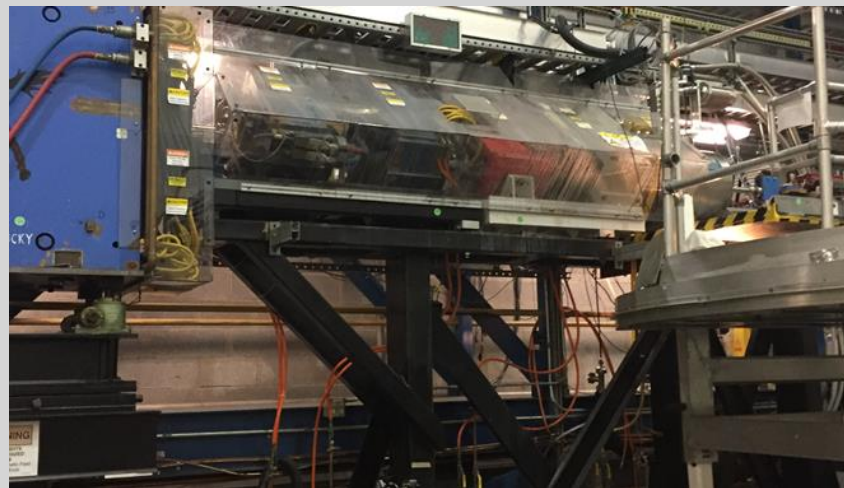
R-HRS Decommissioning



R-HRS Decommissioning (cont.)



Entrance Beamline

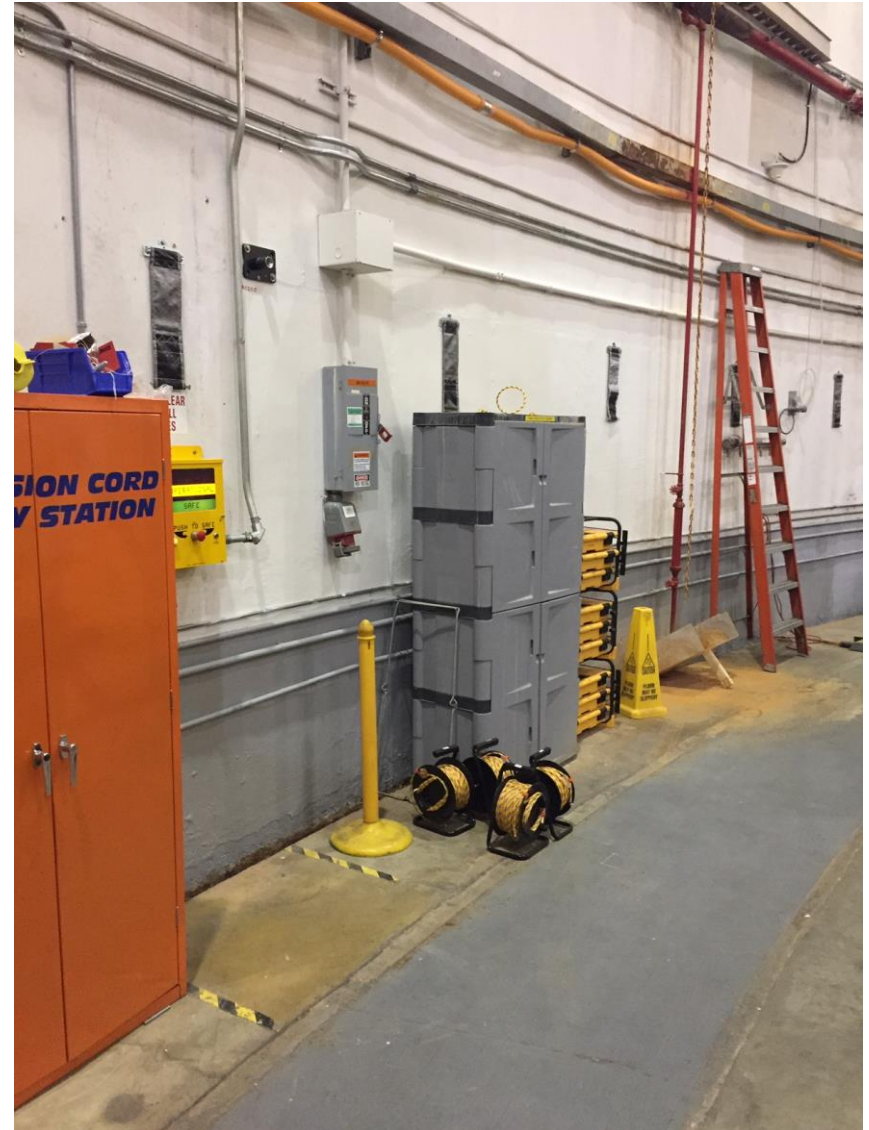


FML Work – Power Upgrade Location



Penetrations for Power Upgrade

FML Work (cont.) – Power Upgrade Location



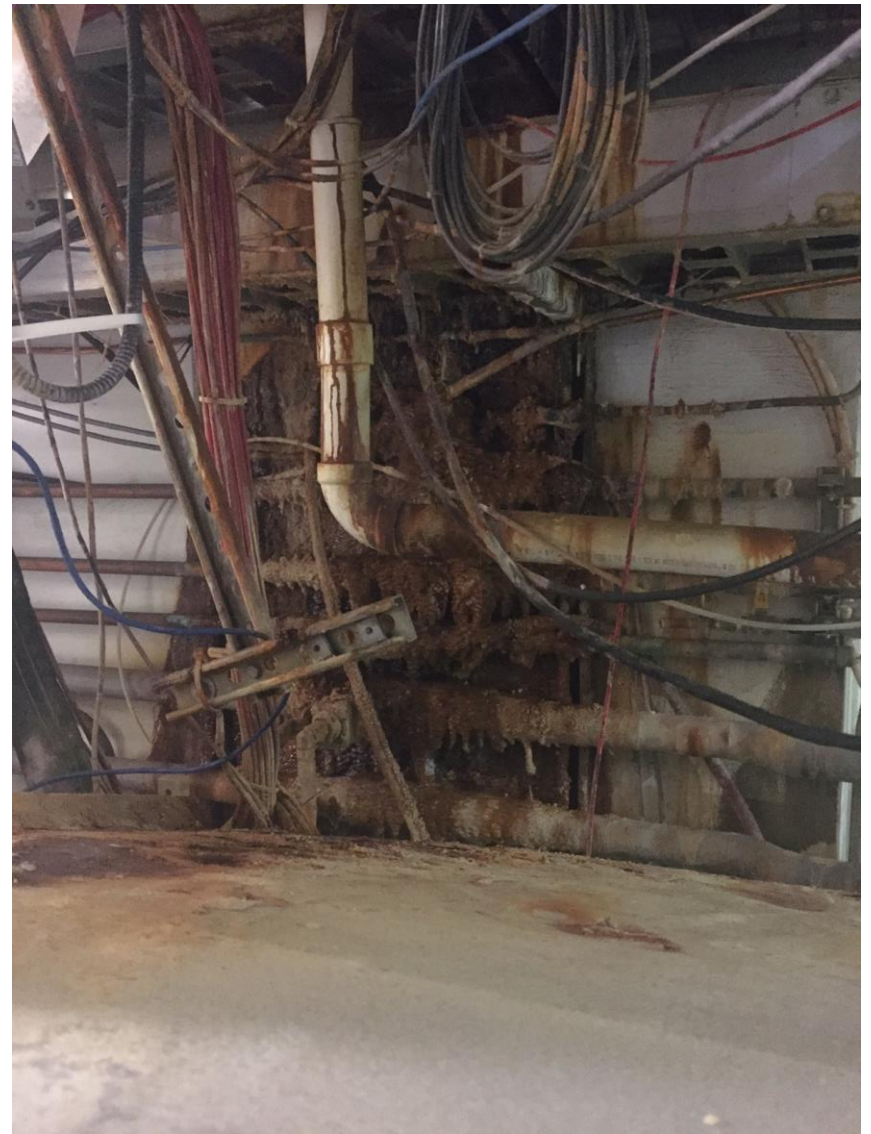
FML Work (cont.) – Move AHU & Electrical Equipment



AHU Needs Moving

Electrical Equipment
Needs Moving.

FML Work (cont.) – Ground Water



FML Work (cont.) – Main AHU & Overhead Lights



Current Work

- Exit beamline modification.
- Beamline shielding assembly and fit test.
- Hydraulic and positioning system checkout.
- Construct upstream work platform.
- Construct LCW manifold and platform.
- Install new lifting holes in floor plates.
- QA and inventory parts as they arrive.
- Front load some periodic maintenance.
- Continue to support collaboration prep work.
- Generating work control document.

Current Work (cont.)



Installation Schedule Highlights

- Three main set of activities.
 - PREXII/CREX equipment removal.
 - SBS equipment installation.
 - FML work list.
- Hall A tech team = 5 member (+1).
- Nearly 250 line items on the schedule.
- Spans over 264 working days.
 - Nearly a 35% increase over original schedule (195 days).
 - FML Work and COVID restrictions considered.
 - Translate to >1calendar year (9/8/2020 – 9/30/2021).
- Milestones highlighted.
- FML work timeline needs approval and could impact schedule.

Summary

- Remove PREX/CREX
- LCW & Power Upgrade
- SBS Equipment
- R-HRS Decommissioning
- Entrance Beamline
- FML Work
- Current Work
- Schedule
- Questions

