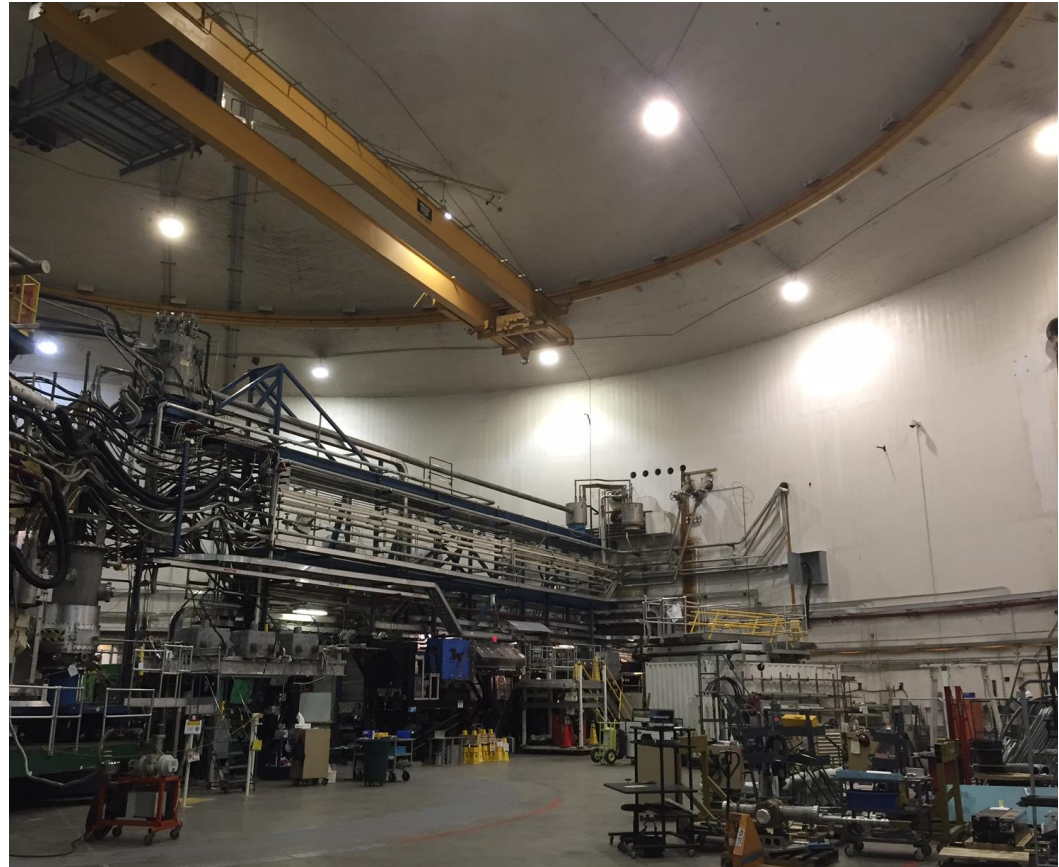


# SBS Experiment Internal Review

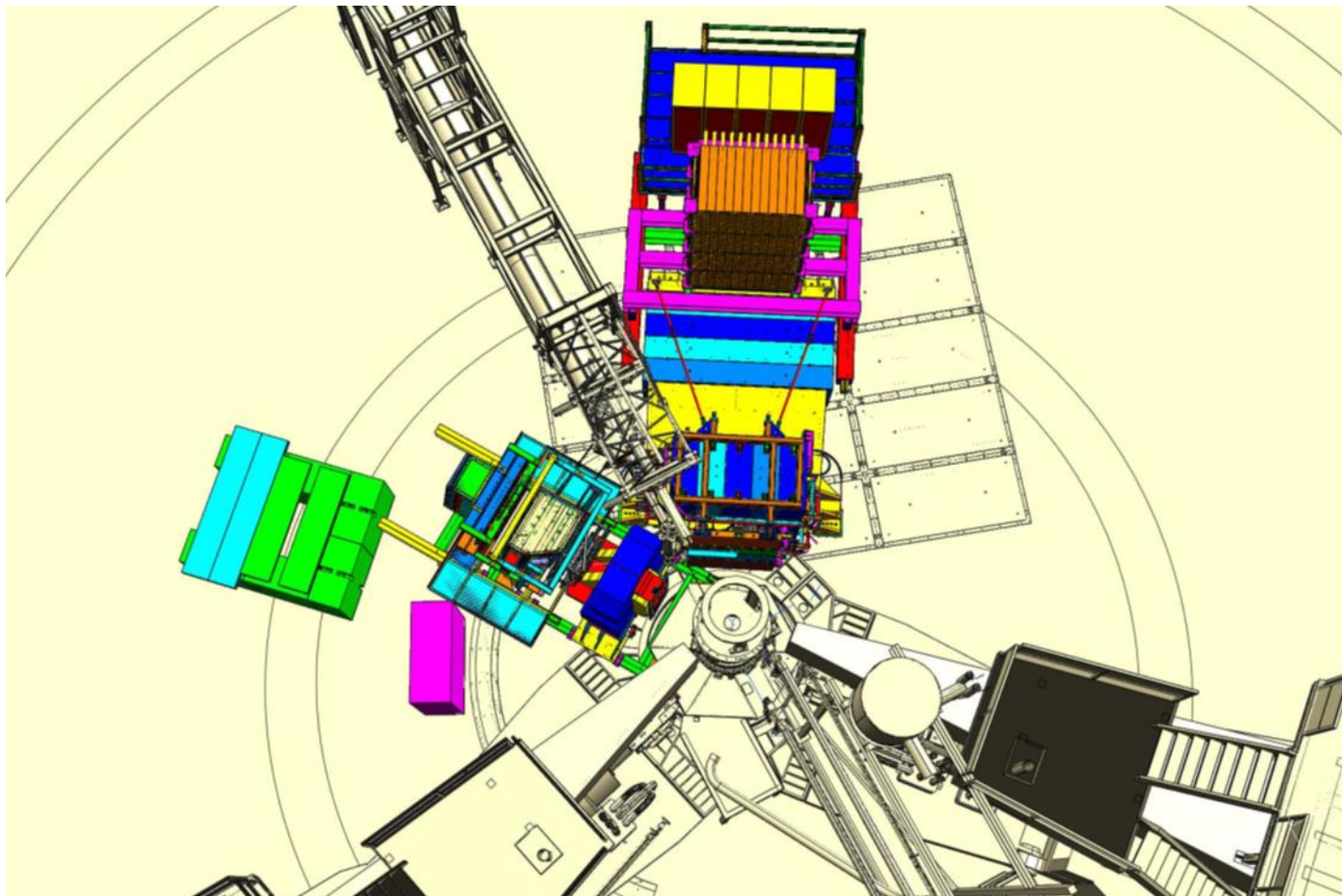
- Hall A Infrastructure
- SBS Magnet & Correctors
- Detectors Move
- DAQ Bunkers

J. Butler

Monday, August 05, 2019



# SBS Installation Planning & Scheduling



# 4 Major Components

---

- Preliminaries
- Removal of PREX/CREX II Experiment Equipment
- Install SBS Equipment
- Final Preparations

# Preliminaries

- Post beam surveys and checklist
- Warm up cryogenic systems
- Bleed up spectrometers and beamline components
- Move both HRS into de-installation position



# De-Installation???

---

As of today, I estimate that it will take 4 – 6 weeks to remove PREX/CREX II equipment from the hall. This estimate includes “estimated” radiation hold, target work, removal of shielding and experimental equipment that is being used in PREX/CREX II.

# Installation of SBS

*These are only a few of the more significant tasks associated with installing SBS...*

- Decommission R-HRS
- Prep L-HRS and Exit Beamline for Installation
- Upgrade Hall LCW
- Transport SBS Equipment to Hall A
- Assemble SBS Magnet, Exit Beamline and Supporting Equipment
- Install Corrector Magnets and Target Chamber
- Install Big Bite Magnet
- Install Equipment Racks and Power Supplies
- Install Detector Packages
- Install Shielding Structures
- Survey and Align equipment into position



# Decommissioning R-HRS

## R-HRS



## Equipment Pass Rollup Door

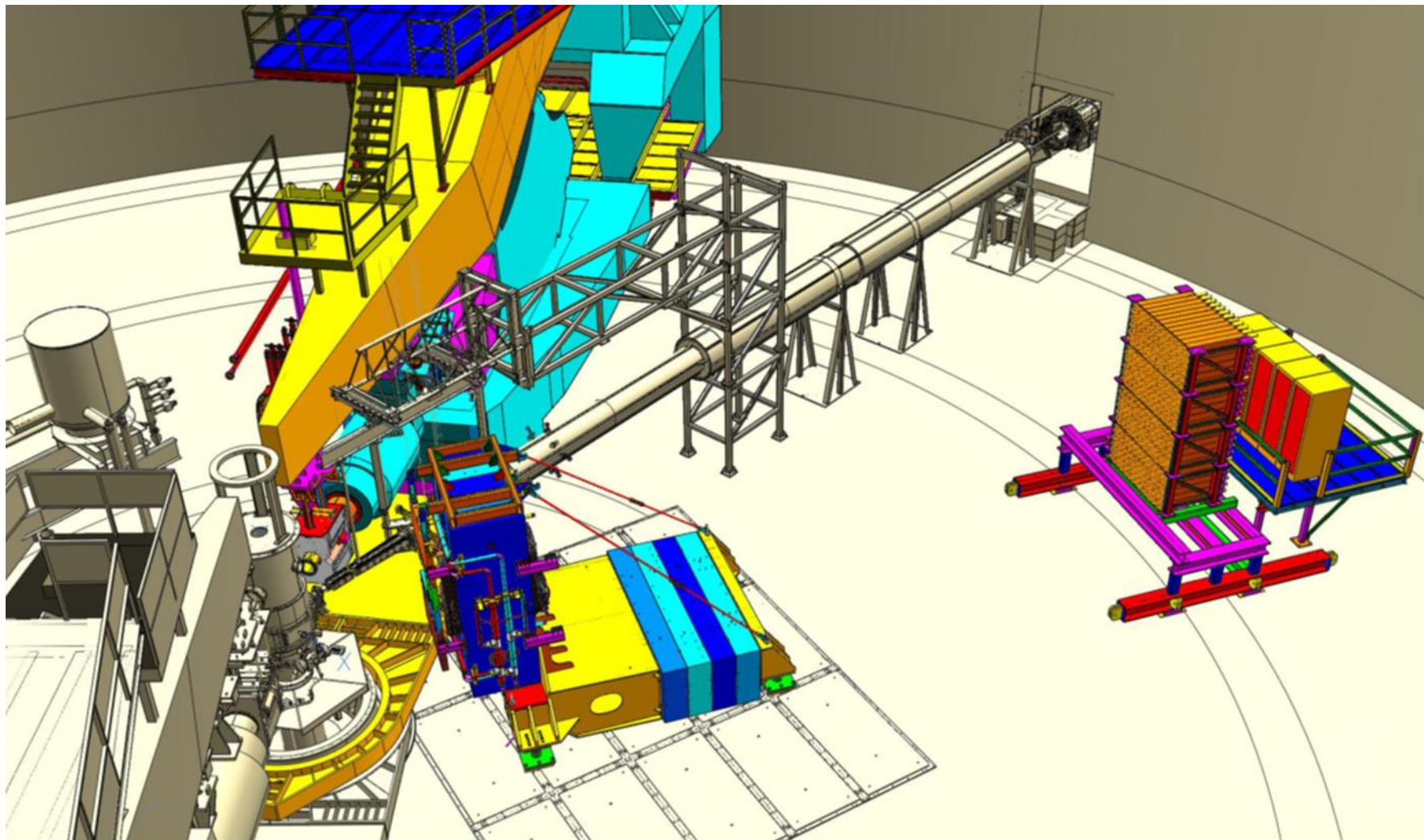


# Exit Beamline





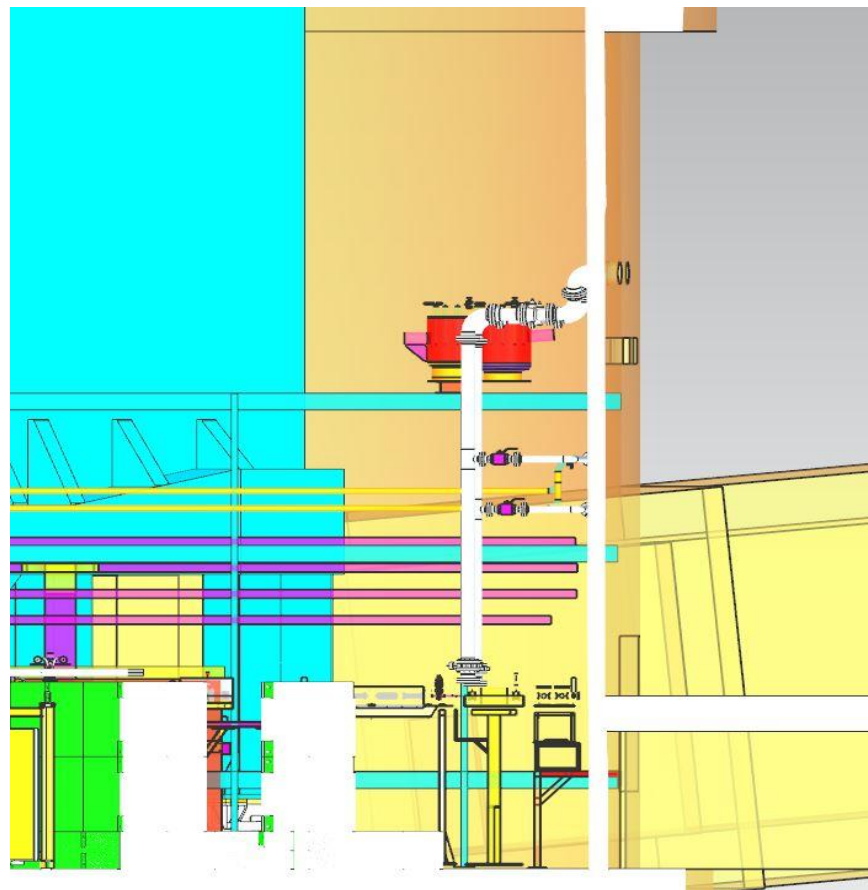
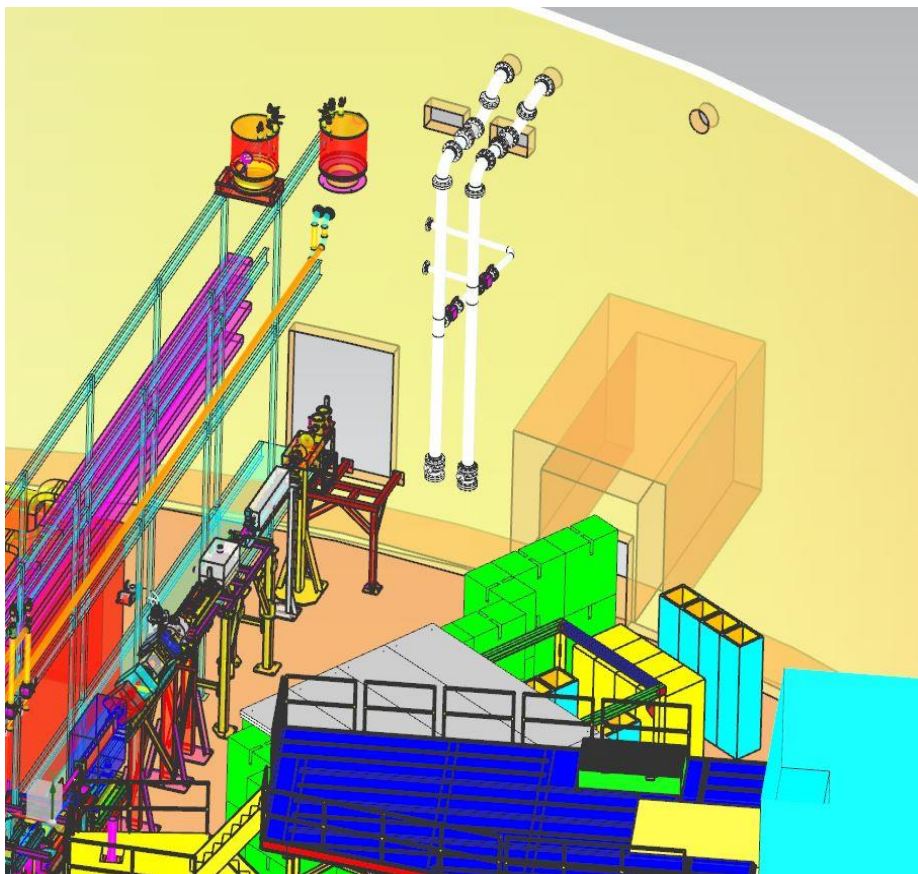
# Exit Beamline Support



# LCW Upgrade



# LCW Upgrade (preliminary)





# SBS Equipment in Test Lab



# SBS Equipment Assembly and Testing

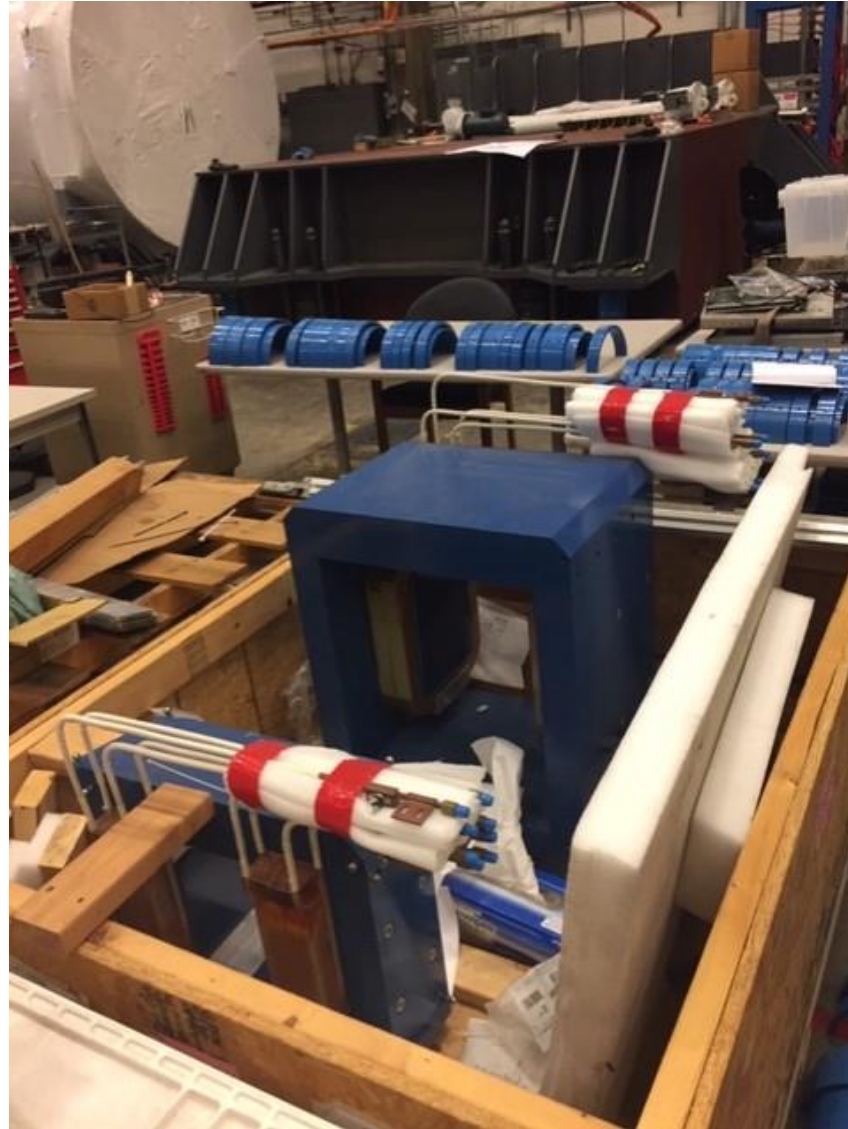




# Exit Beamline Shielding



# Corrector Magnets

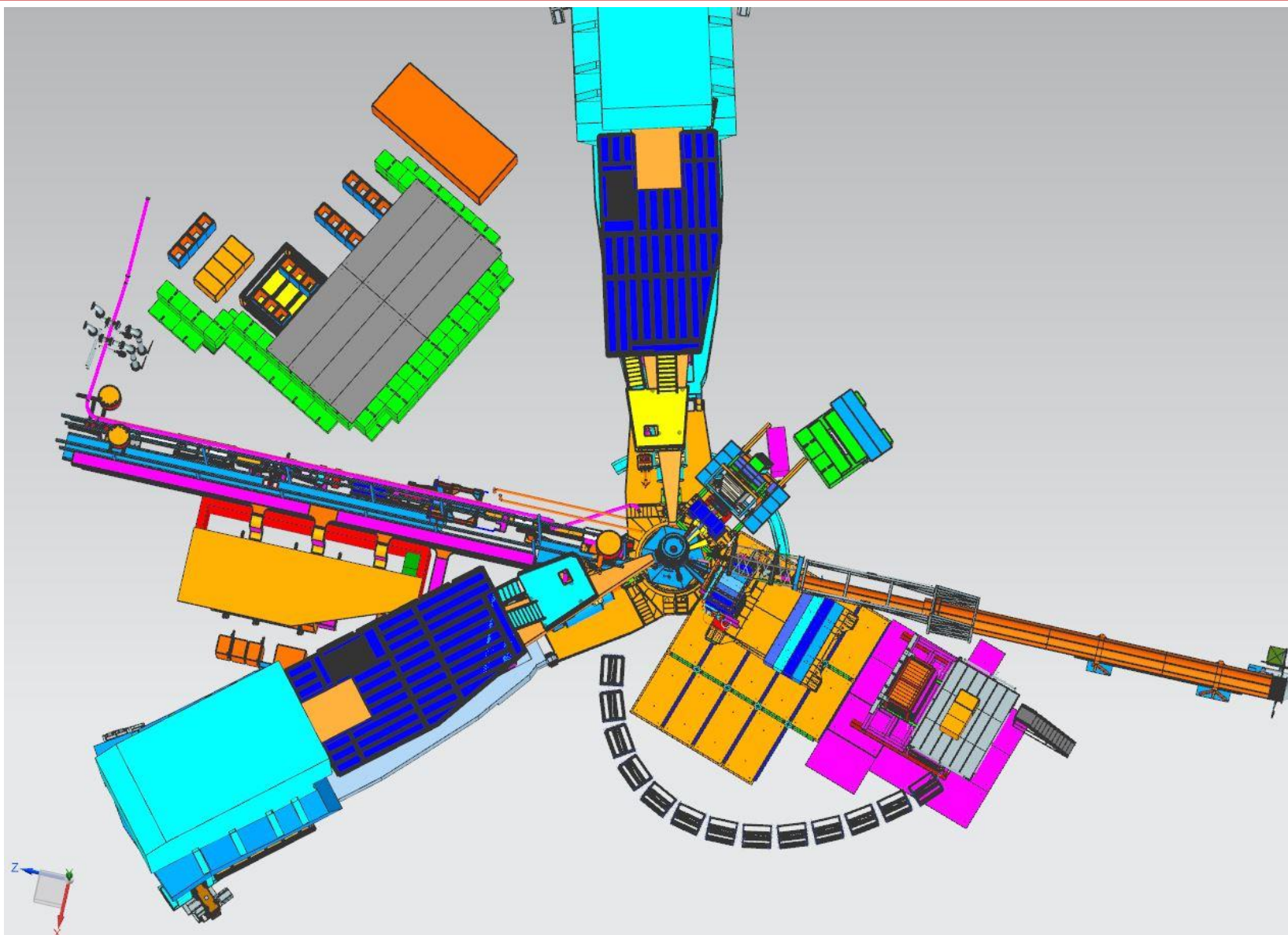


# Big Bite Weldment and Setup

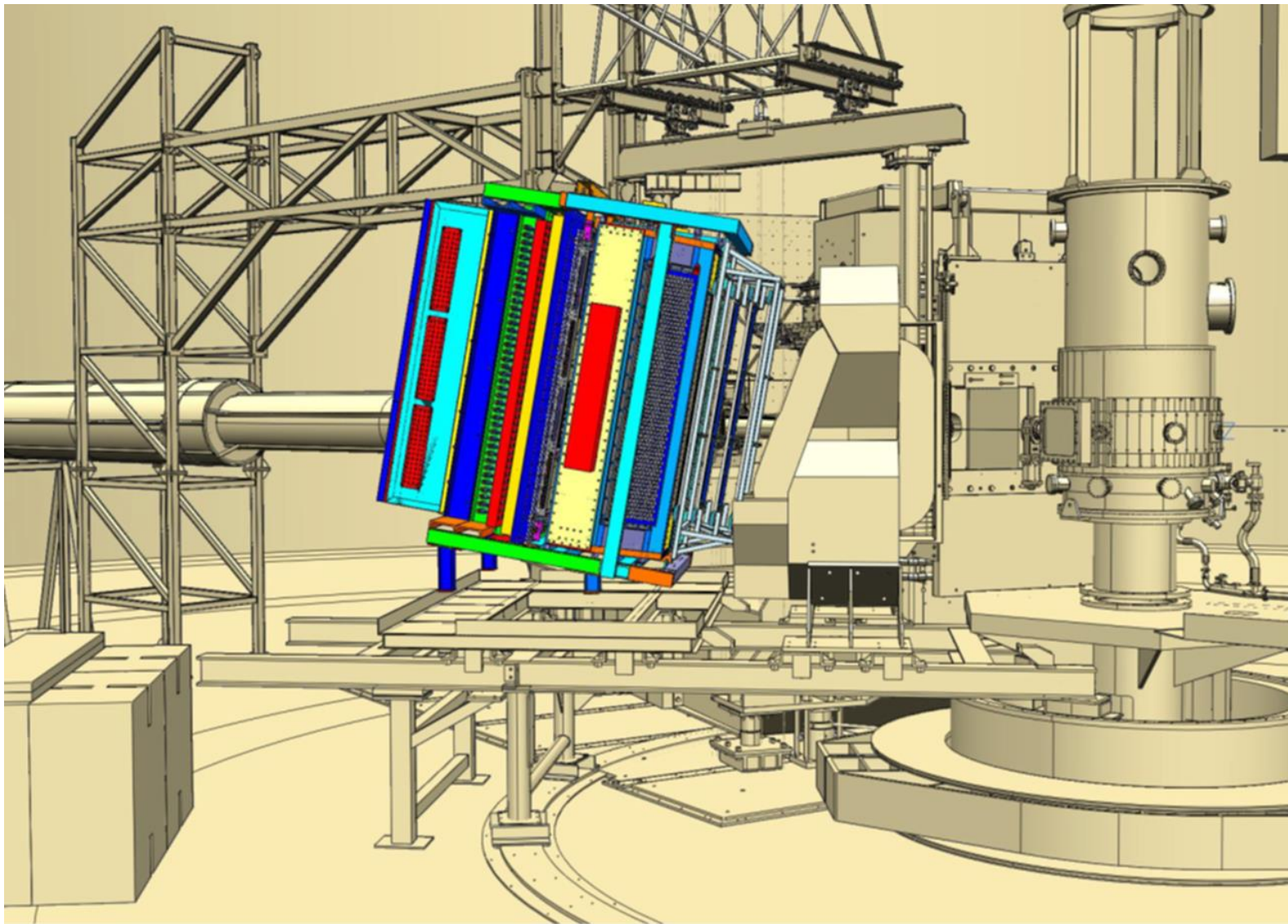




# SBS Installation (cont...)

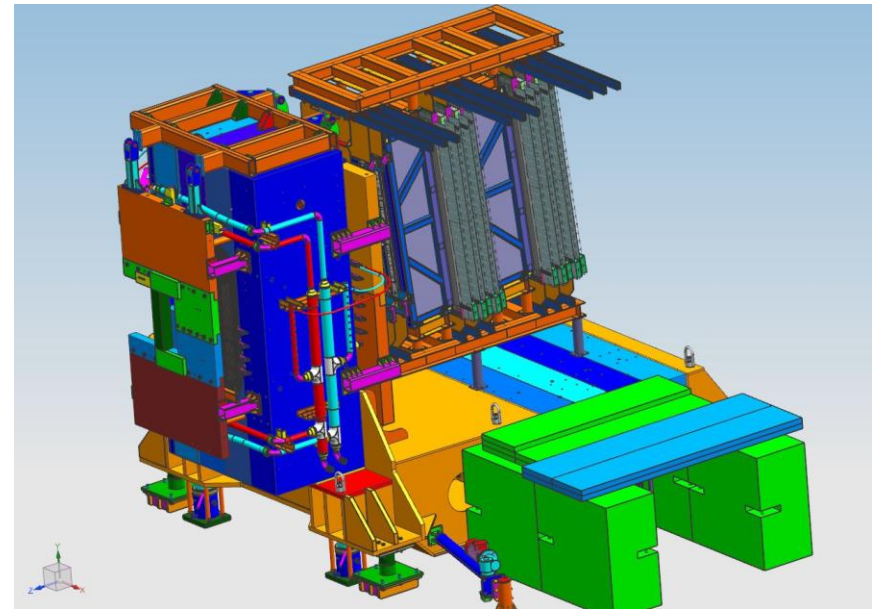
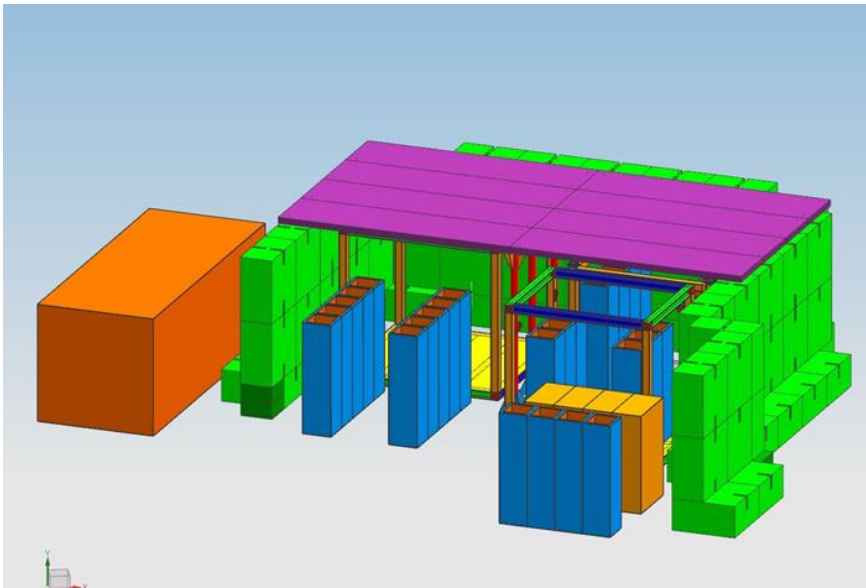


## SBS Installation (cont...)





# (Bunker) Electronics Shielding



# Final Preparations

---

Final Preparations – These are routine activities that we would typically perform at the end of most installation period.

Examples: cryogenic cool down & cleanup, vacuum system pump down & leak check, power supply testing, etc....

# Conclusion...

757-768-1302 or x5544

- Installation will take 225 days (~10 months)
- Working to assembling and test the motion of counterweight assembly
- Requests for assistance should come sooner rather than later
- Make sure we have accounted for all the electronics shielding
- Be Patient

