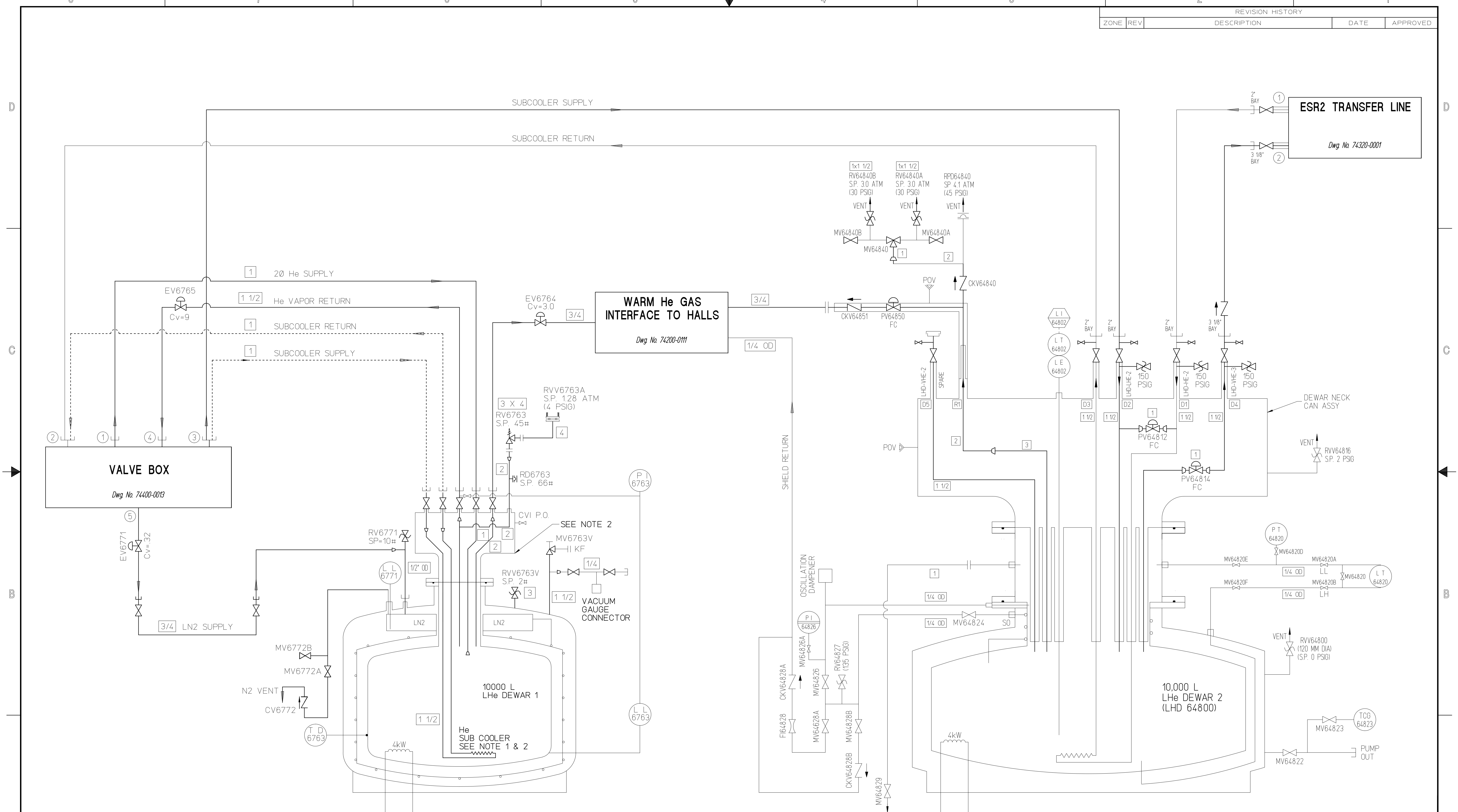


REVISION HISTORY				
ZONE	REV	DESCRIPTION	DATE	APPROVED



- NOTES:
- (6) PARALLEL PATHS 47.7' LG OF 1/2" OD x .035" COPPER TUBING.
 - SEE DWG. 74700-0005 FOR NECK CAN, He SUB COOLER & HEATER DETAILS.

DIM & TOL PER ASME Y14.5 UNLESS OTHERWISE SPECIFIED DIMENSIONS ARE IN INCHES TOLERANCES ARE: FRACTIONS DECIMAL ANGLES + N/A .XX ± N/A .XXX ± N/A + N/A .XX ± N/A .XXX ± N/A	MATERIAL	N/A	U.S. Department of Energy Office of Science Jefferson Lab Thomas Jefferson National Accelerator Facility Operated by Jefferson Science Associates, LLC
	FINISH MACHINED SURFACES DEBURR & BREAK ALL SHARP EDGES	N/A	
THIRD ANGLE PROJECTION	DO NOT SCALE DRAWING	SCALE	NONE
DRAWN	C. BUTLER	DATE	04FEB19
DWG. NO. 74720-0002		USED ON ASSY NO. 74020-0001	SHEET 1 OF 1