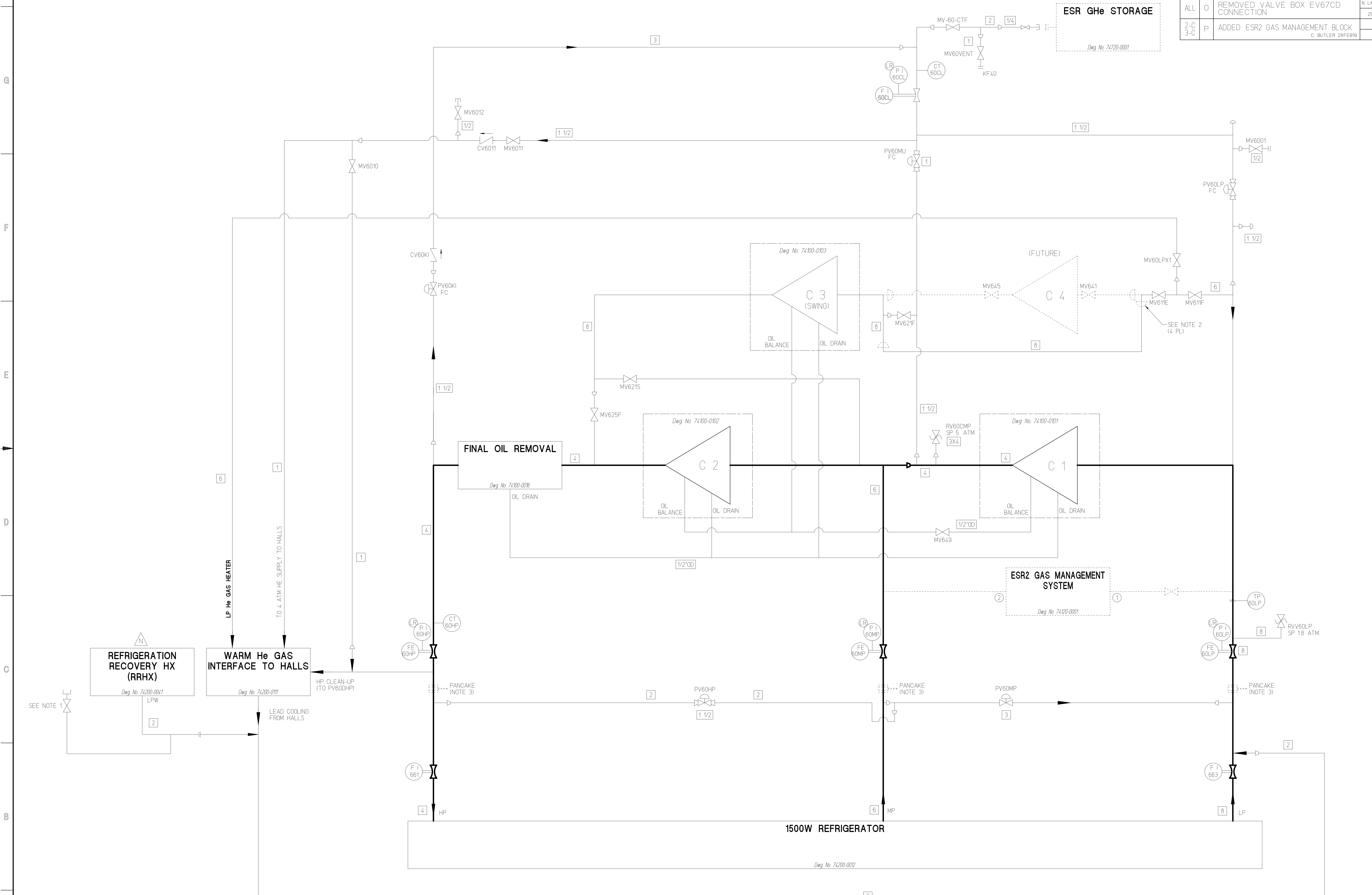


REVISIONS				
ZONE	REV	DESCRIPTION	DATE	APPROVED
ALL	L	GENERAL REVISION	M. ZARECKY 12/07/99	W. C. CHRONIS 1/10/00
ALL	M	GENERAL REVISION	B. REMARKE 10/02/01	P. KNUDSEN 12/2/06
ALL	N	ADDED REFRIGERATION RECOVERY BLOCK. PR-60-CHLA & MV-60-CHLA. DRAWING NUMBER FOR C1, C2 & C3 WAS 74400-0001. ADDED HALL HELIUM POSITIVE PRESSURE LINE.	C. BUTLER 3/9/10	M. WRIGHT 24AUG10
ALL	O	REMOVED VALVE BOX EV67CD CONNECTION	N. LAVERDURE 29.AA.11	M. WRIGHT 10AUG11
2-C 3-C	P	ADDED: ESR2 GAS MANAGEMENT BLOCK	C. BUTLER 28FEB19	



- NOTES:
- 1 1/2" BAYONET LOCATED IN UPPER MEZZANINE LEVEL.
  - FUTURE CONNECTION (FOR C4)
  - FLANGES AND PANCAKES SHALL BE INSTALLED IN ESR1 LP, MP & HP PIPING AFTER THE PLANT HAS BEEN SHUTDOWN FOR INSTALLATION OF ESR2 PIPING CONNECTIONS

**OPEN REV P**  
4/22/19

<small>DWG &amp; TOL PER ANS I 13.5 UNLESS OTHERWISE SPECIFIED DIMENSIONS ARE IN INCHES FRACTIONS: DECIMAL ANGLES: * N/A XX + N/A * N/A XXX + N/A</small>	CADD I.D. NO. /wbs/7wbs_7_474400/E0009	 The Continuous Electron Beam Accelerator Facility SUPPORT NEWS VIRGINIA UNITED STATES DEPARTMENT OF ENERGY
	APPROVALS DRAWN: R. BROWN 4/16/91 CHECKED: D. KASHY 12/9/91 APPROVED: W. CHRONIS 12/9/91 APPROVED: C.H. RODE 12/9/91	
MATERIAL: - FINISH: N/A UNLESS OTHERWISE NOTED DEBURR & BREAK ALL SHARP EDGES DO NOT SCALE DRAWING	SIZE (DWG. NO.) <b>E</b> 74400-0009 USED ON ASSY NO. 74000-0101	REV. P SHEET 1 OF 1