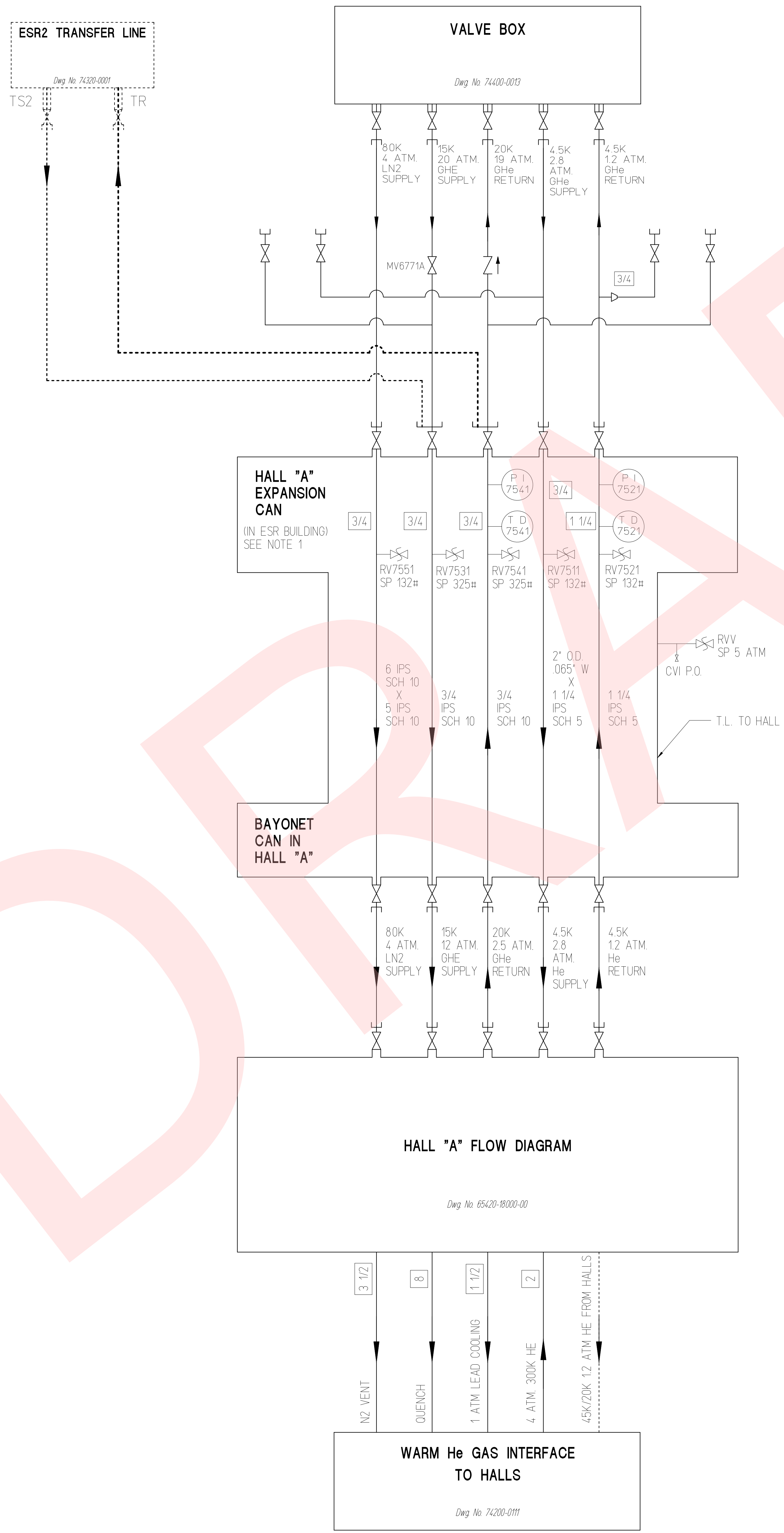


REVISIONS				
ZONE	REV	DESCRIPTION	BY	APPROVED
ALL	H	GENERAL REVISION	M ZARECKY	W.C. CHRONIS
ALL	I	GENERAL REVISION	RAY GANN	P.K. 1-27-05
ALL	J	UPDATED LINES FROM VALVE BOX MODIFIED LINE LABELS TO GAS INTERFACE	A. HAZEMAN	D.A. 1-28-05
ALL	K	ADDED ESR2 TRANSFER LINE BLOCK REVISED CHANGED THE U-TUBE LINE-UP	D. SUPPITT	M. WRIGHT
			STEWART	P. KROSEN
			P. STEWART	BUTLER 6/14/19



NOTE:
1. REFER TO 74400-0004 FOR INTERNAL CONSTRUCTION.

<small>DIM & TOL PER ANSI Y14.5 UNLESS OTHERWISE SPECIFIED DIMENSIONS ARE IN INCHES TOLERANCES ARE FRACTIONS DECIMAL ANGLES + N/A .XX + N/A * N/A * XXX + N/A</small>	CADD ID NO. /wbs7/wbs7.4/74400/E0010	 The Continuous Electron Beam Accelerator Facility NEWPORT NEWS, VIRGINIA UNITED STATES DEPARTMENT OF ENERGY																					
	<table border="1"> <tr> <th>APPROVALS</th> <th>DATE</th> </tr> <tr> <td>DRAWN R BROWN</td> <td>4/19/91</td> </tr> <tr> <td>CHECKED D ARENIUS</td> <td>9/11/95</td> </tr> <tr> <td>APPROVED W.C. CHRONIS</td> <td>9/12/98</td> </tr> <tr> <td>APPROVED -</td> <td>-</td> </tr> </table>		APPROVALS	DATE	DRAWN R BROWN	4/19/91	CHECKED D ARENIUS	9/11/95	APPROVED W.C. CHRONIS	9/12/98	APPROVED -	-	<table border="1"> <tr> <td>SIZE</td> <td>DWG NO.</td> <td>REV</td> </tr> <tr> <td>1/4"</td> <td>74400-0010</td> <td>K</td> </tr> <tr> <td>DATE</td> <td>USED ON ASSY NO.</td> <td>SHEET</td> </tr> <tr> <td>12/19/01</td> <td>74200-0101</td> <td>1 OF 1</td> </tr> </table>	SIZE	DWG NO.	REV	1/4"	74400-0010	K	DATE	USED ON ASSY NO.	SHEET	12/19/01
APPROVALS	DATE																						
DRAWN R BROWN	4/19/91																						
CHECKED D ARENIUS	9/11/95																						
APPROVED W.C. CHRONIS	9/12/98																						
APPROVED -	-																						
SIZE	DWG NO.	REV																					
1/4"	74400-0010	K																					
DATE	USED ON ASSY NO.	SHEET																					
12/19/01	74200-0101	1 OF 1																					
<small>FINISH N/A UNLESS OTHERWISE NOTED DEBurr & BREAK ALL SHARP EDGES</small>	<small>DO NOT SCALE DRAWING</small>	<small>FORM NONE</small>																					