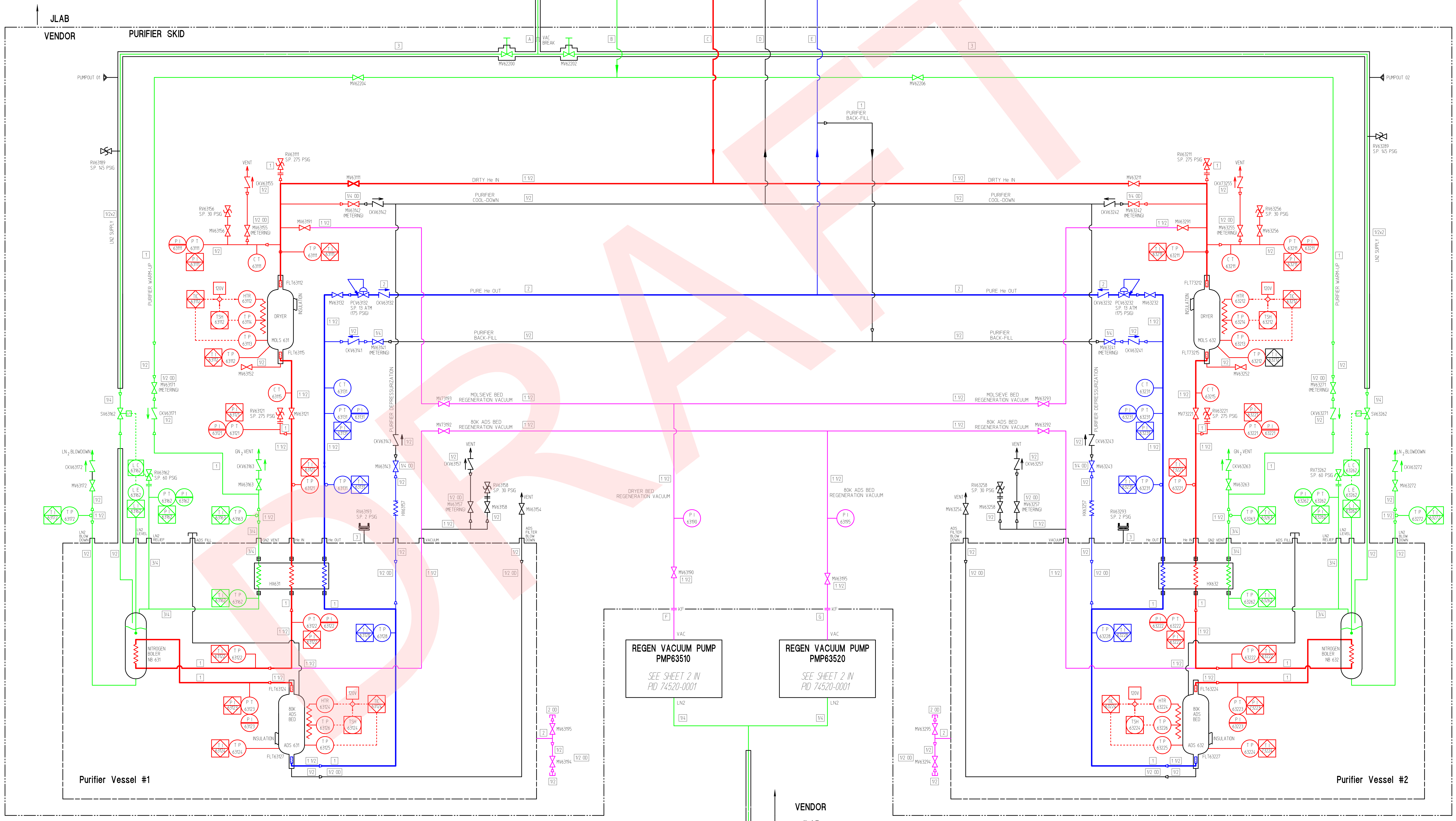


REVISION HISTORY				
ZONE	REV	DESCRIPTION	DATE	APPROVED

PROCESS LINE KEY			
CLEAN GAS	DIRTY GAS	VACUUM	NITROGEN

LN2/GN2 DISTRIBUTION SYSTEM
P&ID DWG # 74720-0000

He RECOVERY SYSTEM
P&ID DWG # 74520-0000

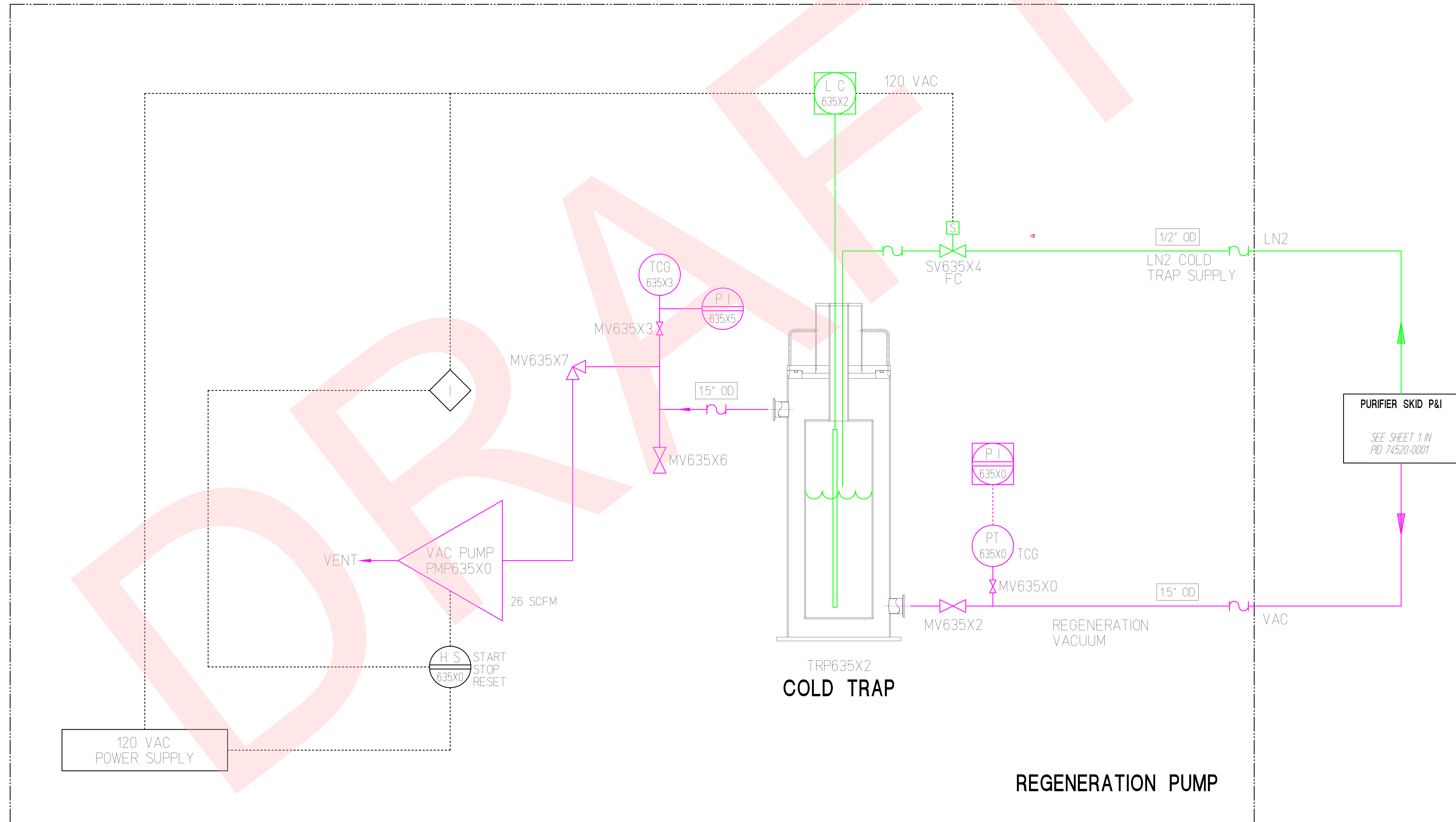


REGEN VACUUM PUMP PMP63510
SEE SHEET 2 IN
PID 74520-0001

REGEN VACUUM PUMP PMP63520
SEE SHEET 2 IN
PID 74520-0001

LN2/GN2 DISTRIBUTION SYSTEM
P&ID DWG # 74720-0000

DIM & FOL PER ASME Y14.5 UNLESS OTHERWISE SPECIFIED DIMENSIONS ARE IN INCHES FRACTIONS DECIMAL ANGLES + N/A X + N/A + N/A XXX + N/A XXX + N/A	MATERIAL N/A	U.S. Department of Energy Office of Science Operated by Jefferson Science Associates, LLC
THIRD ANGLE PROJECTION 	FINISH MACHINED SURFACES UNLESS OTHERWISE NOTED REFER TO ALL SHARP EDGES	ESR PURIFIER SYSTEM P&I DIAGRAM DWG. NO. 74520-0001 DRAWN: C. BUTLER DATE: 28MAY19 SCALE: NONE SHEET 1 OF 2



NOTES:

1. THE TWO REGENERATION PUMPS ARE ON ONE SKID.
2. X DENOTES PUMP #1 OR 2.