

HTR-1703
GAS HEATER
AMBIENT AIR FIN
DESIGN PRESSURE 300 PSIG(21.7bar)
DESIGN TEMP. -423/1500°F(20/339K)
MATL. ALUMINUM

STR-1701
STRAINER
DESIGN PRESSURE 30 PSIG (3.1bar) & FV
DESIGN TEMP. -40/300°F (233/422K)
100 MESH

HTR-1701
GAS HEATER
5KW, 480V, 3PH, WYE
DES. PRESS. 300 PSIG (21.7 bar) & FV ΔP= 2 PSI (138 mbar)
DESIGN TEMP. 400°F (478K)
MATERIAL: 304 SST
INCOLLOY ELEMENTS

C-1700
GAS BLOWER
70 ACFM (119 M3/HR)
DES. PRESS. 25 PSIG (2.7 bar)
MATERIAL: C.I./D.I.
DESIGN TEMP. 300°F (422K)

P-1702
REGEN. VAC. PUMP
ROTARY VANE

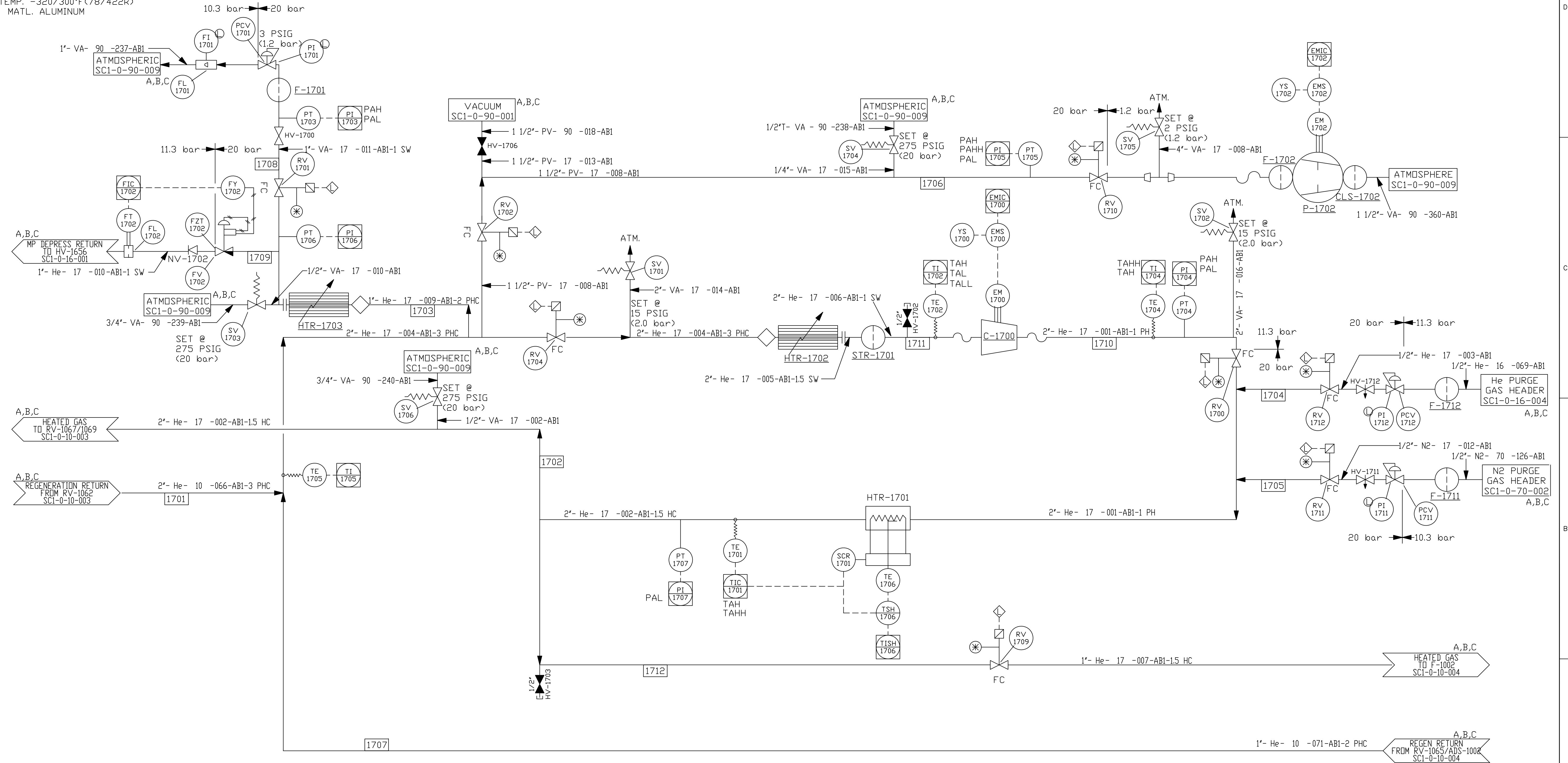
EM-1700
ELECTRIC MOTOR
3HP, 3500 RPM
460V, 3Ø, 60HZ

EM-1702
ELECTRIC MOTOR
3 HP, 1750 RPM
460V, 3Ø, 60HZ

F-1702
FILTER
DESIGN PRESS.: FV/30 PSIG
DESIGN TEMP.: 150°F(339K)

CLS-1702
MIST ELIMINATOR
DESIGN PRESS.: FV/30 PSIG
DESIGN TEMP.: 150°F(339K)

		REVISIONS			
REV	ZONE	DESCRIPTION	DATE	APPROVALS	
2		REVISED PER DEED #3965	5/31/91		
3		REVISED PER DEO #3938	8/26/91		
4		REVISED PER DEO #4641	2/5/92		
5		REVISED AS-BUILT PER DEO #5793	10/93		
6		REVISED: ADDED NOTE 1	6/5/19	CRB	CCP JOW KDD DMA



NOTES:
1) EXISTING TAG NUMBERS SHOWN ON THIS P&I SHALL BE PRECEDED BY THE NUMBER '6' SUCH TO COMPLY WITH JLAB TAG NUMBERING SCHEME.

EQUIP. THIS DWG.	PROPRIETARY AND CONFIDENTIAL	PSI PROCESS SYSTEMS INTERNATIONAL INC. 20 WALKUP DR. WESTBOROUGH, MASSACHUSETTS 01581 USA P & ID: He REF./LIQ. COLDBOX CARBON ADS. REGEN. MAGNET TEST LAB. CRYOGENICS SYSTEM SUPERCONDUCTING SUPER COLLIDING LABORATORY DALLAS, TEXAS
	EXCEPT AS OTHERWISE AGREED IN WRITING, THE INFORMATION AND DESIGN DISCLOSED HEREIN ARE THE PROPERTY OF PROCESS SYSTEMS INTERNATIONAL AND MUST NOT BE COPIED OR DISTRIBUTED OUTSIDE PSI EXCEPT TO AUTHORIZED PERSONS WITH A GENUINE NEED TO KNOW WHO BY THE USE HEREOF ACKNOWLEDGE PSI OWNERSHIP AND AGREE TO MAINTAIN THIS INFORMATION AND DESIGN IN STRICT CONFIDENCE.	
CAD FILE NO. 486WRI	SIZE D	DWG. NO. SC1-0-17-001
SCALE	WEIGHT	REV. 6
		SHEET 1 OF 1