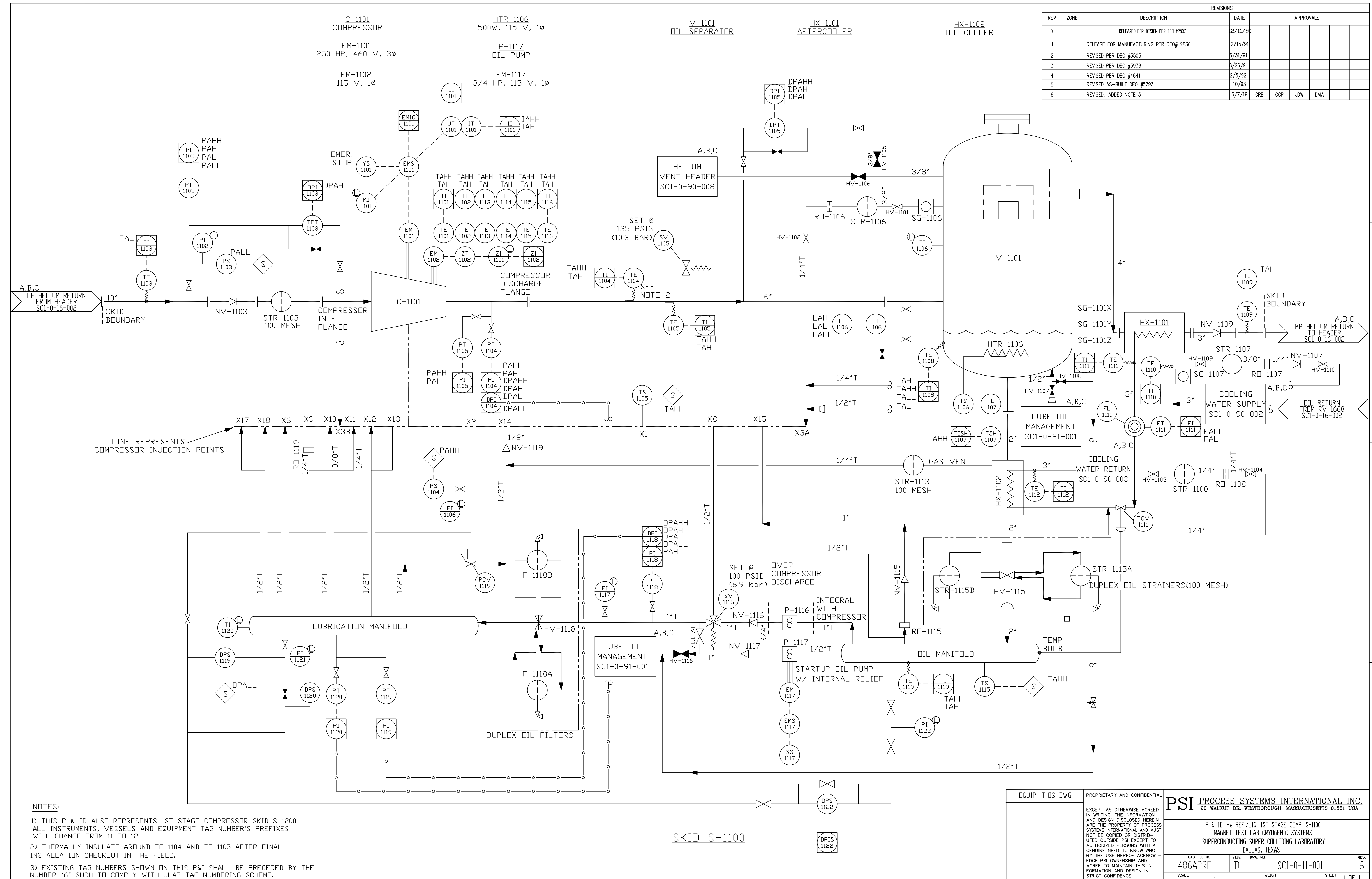


REV		ZONE	DESCRIPTION	DATE	APPROVALS			
0			RELEASED FOR DESIGN PER DEO #2537	12/11/90				
1			RELEASE FOR MANUFACTURING PER DEO# 2836	2/15/91				
2			REVISED PER DEO #3505	5/31/91				
3			REVISED PER DEO #3938	8/26/91				
4			REVISED PER DEO #4641	2/5/92				
5			REVISED AS-BUILT DEO #5793	10/93				
6			REVISED: ADDED NOTE 3	5/7/19	CRB	CCP	JOW	DMA



- NOTES:
- THIS P & ID ALSO REPRESENTS 1ST STAGE COMPRESSOR SKID S-1200. ALL INSTRUMENTS, VESSELS AND EQUIPMENT TAG NUMBER'S PREFIXES WILL CHANGE FROM 11 TO 12.
 - THERMALLY INSULATE AROUND TE-1104 AND TE-1105 AFTER FINAL INSTALLATION CHECKOUT IN THE FIELD.
 - EXISTING TAG NUMBERS SHOWN ON THIS P&I SHALL BE PRECEDED BY THE NUMBER '6' SUCH TO COMPLY WITH JLAB TAG NUMBERING SCHEME.

EQUIP. THIS DWG.	PROPRIETARY AND CONFIDENTIAL	PSI PROCESS SYSTEMS INTERNATIONAL INC. 20 WALKUP DR. WESTBOROUGH, MASSACHUSETTS 01581 USA	
EXCEPT AS OTHERWISE AGREED IN WRITING, THE INFORMATION AND DESIGN DISCLOSED HEREIN ARE THE PROPERTY OF PROCESS SYSTEMS INTERNATIONAL AND MUST NOT BE COPIED OR DISTRIBUTED OUTSIDE PSI EXCEPT TO AUTHORIZED PERSONS WITH A GENUINE NEED TO KNOW WHO BY THE USE HEREOF ACKNOWLEDGE PSI OWNERSHIP AND AGREE TO MAINTAIN THIS INFORMATION AND DESIGN IN STRICT CONFIDENCE.		P & ID REF./LIQ. 1ST STAGE COMP. S-1100 MAGNET TEST LAB CRYOGENIC SYSTEMS SUPERCONDUCTING SUPER COLLIDING LABORATORY DALLAS, TEXAS	
CAD FILE NO. 486APRF	SIZE D	DWG. NO. SC1-0-11-001	REV. 6
SCALE	WEIGHT	SHEET 1 OF 1	