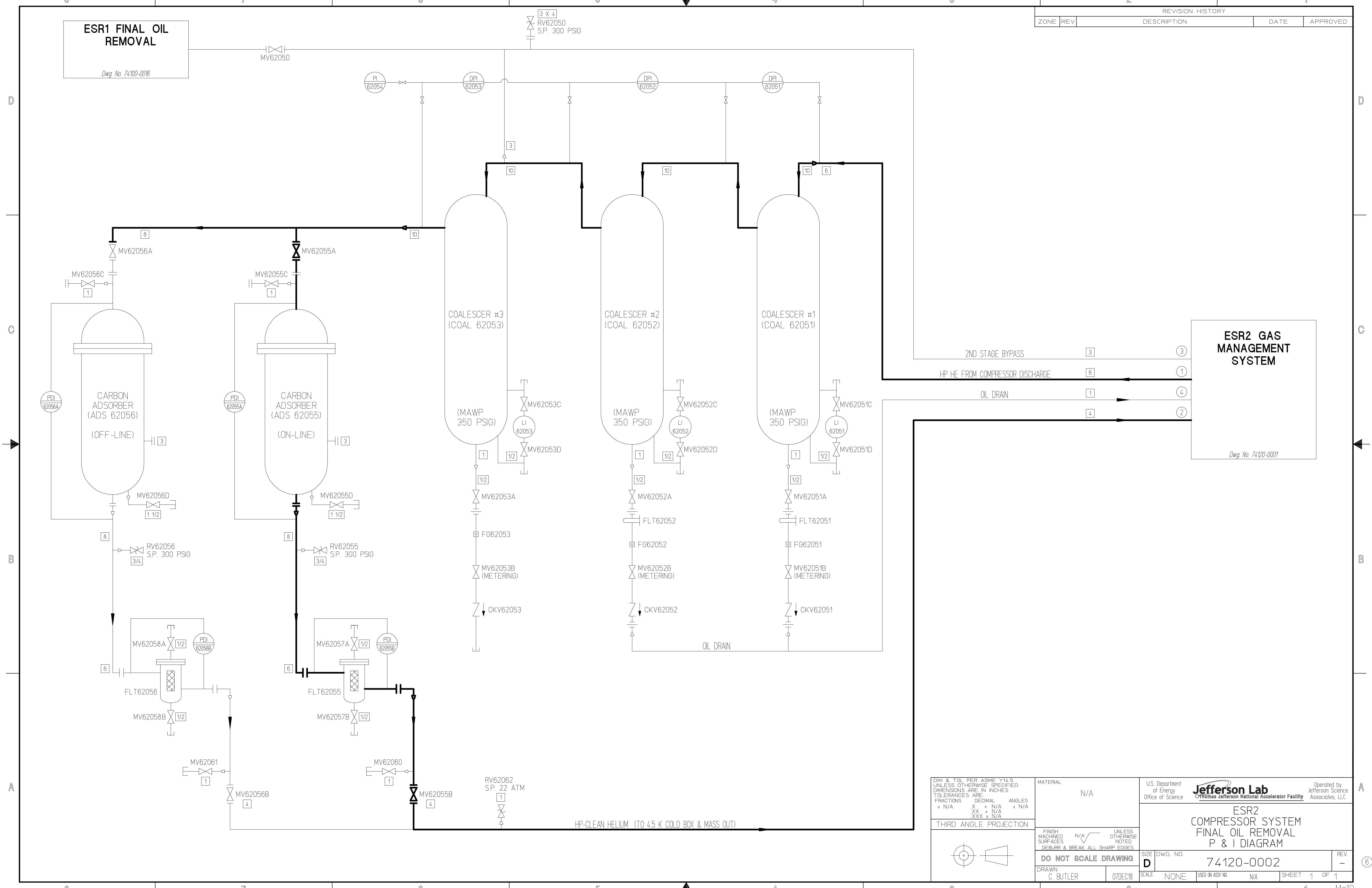


REVISION HISTORY				
ZONE	REV	DESCRIPTION	DATE	APPROVED

ESR1 FINAL OIL REMOVAL
Dwg. No. 74100-0016

ESR2 GAS MANAGEMENT SYSTEM
Dwg. No. 74120-0001



DIM & TOL PER ASME Y14.5 UNLESS OTHERWISE SPECIFIED DIMENSIONS ARE IN INCHES TOLERANCES ARE: FRACTIONS DECIMAL ANGLES + N/A X ± N/A ± N/A + N/A XX ± N/A ± N/A + N/A XXX ± N/A	MATERIAL	N/A	U.S. Department of Energy Office of Science Jefferson Lab <small>Thomas Jefferson National Accelerator Facility</small> Operated by Jefferson Science Associates, LLC
	FINISH MACHINED SURFACES DEBURR & BREAK ALL SHARP EDGES UNLESS OTHERWISE NOTED		
THIRD ANGLE PROJECTION	DO NOT SCALE DRAWING DRAWN: C. BUTLER DATE: 07DEC18		SIZE DWG. NO. D 74120-0002 SCALE NONE USED ON ASSY NO. N/A SHEET 1 OF 1