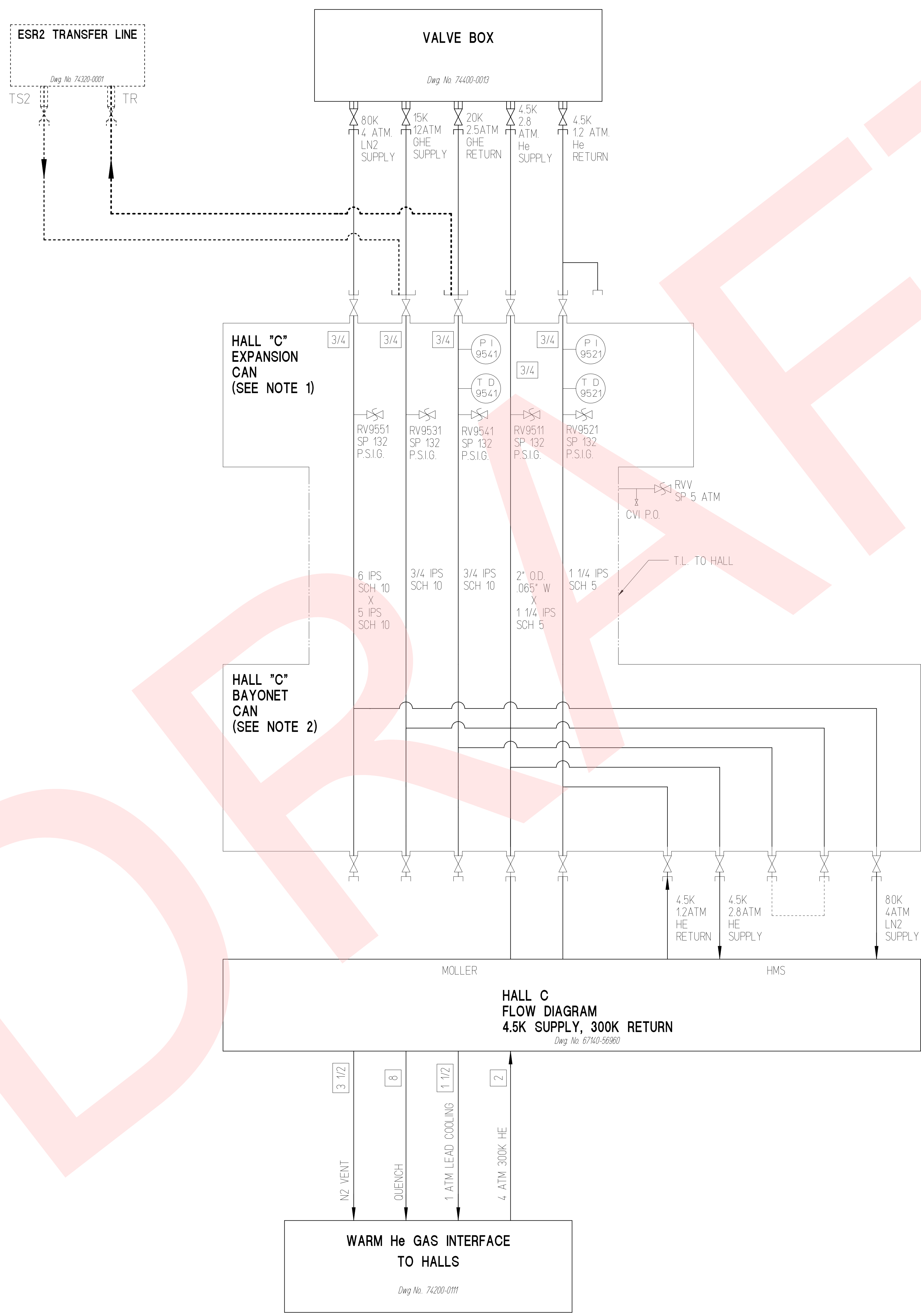


REVISIONS				
ZONE	REV	DESCRIPTION	BY	APPROVED
ALL	K	GENERAL REVISION	M ZARECKY 10/26/91 RAY GANN DANA ARENIUS	RAY GANN 10/26/91 DANA ARENIUS
ALL	L	GENERAL REVISION	A HADENMAN 02/20/92	P. KILGUS 02/20/92 D. ARENIUS
ALL	M	CHANGES FOR O-WEAK EXPERIMENT. MODIFIED LINE LABELS TO GAS INTERFACE.	E. KURZEK 10/26/91 D. JOFFETT 02/10/92	M. BREIT 10/26/91 P. KILGUS 02/10/92
ALL	N	ADDED ESR2 TRANSFER LINE BLOCK REVISED CHANGED THE U-TUBE LINE-UP	P. STEWART 01/14/93	P. STEWART 01/14/93



NOTES
 1. REFER TO 74400-0006 FOR INTERNAL CONSTRUCTION.
 2. REFER TO 74400-0040 FOR INTERNAL CONSTRUCTION.

DIM & TOL PER ANSI Y14.5 UNLESS OTHERWISE SPECIFIED DIMENSIONS ARE IN INCHES TOLERANCES ARE FRACTIONS DECIMAL ANGLES X N/A XX + N/A * N/A * XXX + N/A	CADD ID NO. /wbs7/wbs7_4/74400/E0012	 The Continuous Electron Beam Accelerator Facility 12 WILMINGTON AVENUE NEWPORT NEWS, VIRGINIA 23606 UNITED STATES DEPARTMENT OF ENERGY
	APPROVALS	
MATERIAL	DRAWN R BROWN 4/19/91	ESR HALL 'C' INTERFACE FLOW DIAGRAM
FINISH N/A UNLESS OTHERWISE NOTED	CHECKED D ARENIUS 9/11/95 RAY GANN 9/11/95	
DEBERR & BREAK ALL SHARP EDGES	APPROVED W.C. CHRONIS 9/12/98	
DO NOT SCALE DRAWING	APPROVED -	SIZE DWG NO. 74400-0012 NONE USED ON ASSY NO. 74000-0101 SHEET 1 OF 1