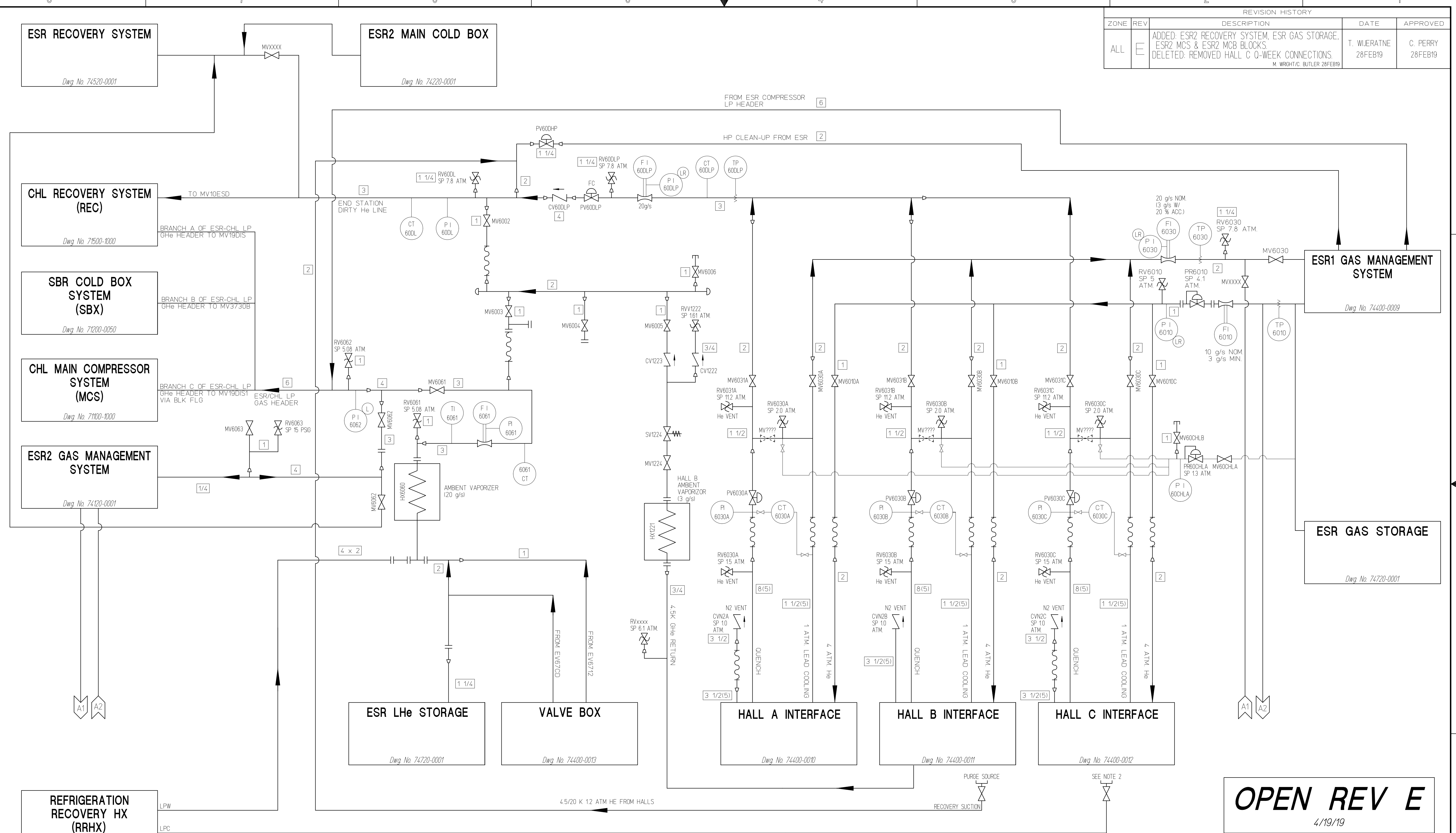


REVISION HISTORY				
ZONE	REV	DESCRIPTION	DATE	APPROVED
ALL	E	ADDED: ESR2 RECOVERY SYSTEM, ESR GAS STORAGE, ESR2 MCS & ESR2 MCB BLOCKS. DELETED: REMOVED HALL C Q-WEEK CONNECTIONS. M. WRIGHT/C. BUTLER 28FEB19	T. WILERATNE 28FEB19	C. PERRY 28FEB19



NOTES

- VJ FLEX HOSE CONNECTED TO THIS LOCATION TO RETURN FLOW FROM THE HIGH LOAD HALL A TARGET.
- CONNECTION WAS FOR HALL C Q-WEEK

ABBREVIATION TABLE	
HPC	HIGH PRESSURE COLD
HPW	HIGH PRESSURE WARM
LPC	LOW PRESSURE COLD
LPW	LOW PRESSURE WARM
MCB	MAIN COLD BOX
MCS	MAIN COMPRESSOR SYSTEM

DOCUMENT CONTROL STAMP	DIM & TOL PER ASME Y14.5 UNLESS OTHERWISE SPECIFIED DIMENSIONS ARE IN INCHES TOLERANCES ARE: FRACTIONS DECIMAL ANGLES + N/A X + N/A * N/A XXX + N/A
MATERIAL	N/A
FINISH	N/A UNLESS OTHERWISE NOTED DEBURR & BREAK ALL SHARP EDGES
DO NOT SCALE DRAWING	

TRACKING NO. N/A	
APPROVALS	DATE
M. WRIGHT	29JAN03
PETE KNUDSEN	8-22-03
V. GANNI	8-22-03
APPROVED	

OPEN REV E
4/19/19

Thomas Jefferson National Accelerator Facility NEWPORT NEWS, VIRGINIA UNITED STATES DEPARTMENT OF ENERGY	
ESR WARM HELIUM GAS INTERFACE TO HALLS (EWG) FLOW DIAGRAM	
SIZE DWG. NO.	REV
D 74200-0111	E
SCALE N/A	SHEET 1 OF 1
USED ON ASSY NO. 74000-0101	Me10