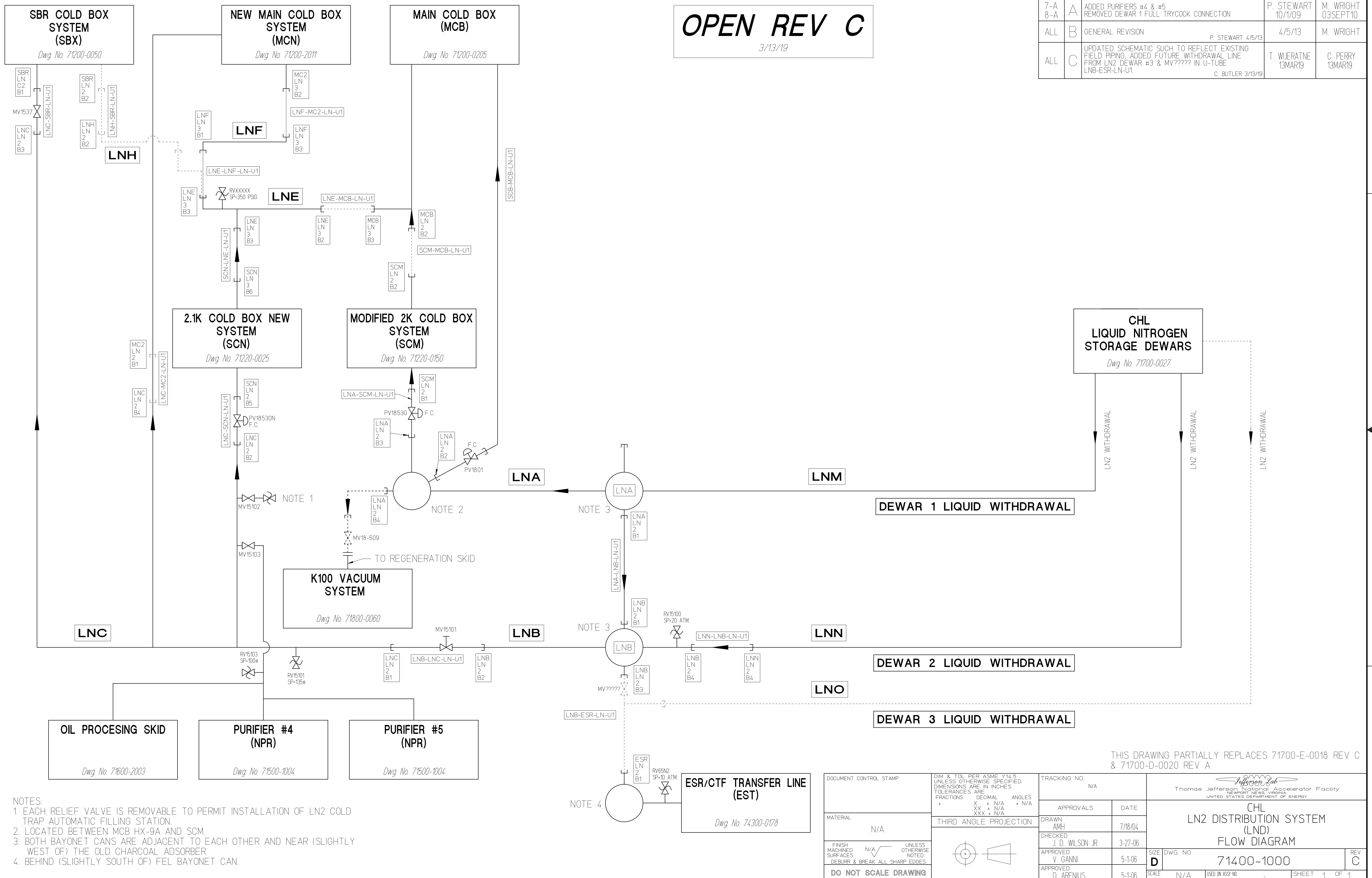


REVISION HISTORY				
ZONE	REV	DESCRIPTION	DATE	APPROVED
7-A	8-A	ADDED PURIFIERS #4 & #5 REMOVED DEWAR 1 FULL TRYCOCK CONNECTION	P. STEWART 10/1/09	M. WRIGHT 03SEPT10
ALL	B	GENERAL REVISION P. STEWART 4/5/13	4/5/13	M. WRIGHT
ALL	C	UPDATED SCHEMATIC SUCH TO REFLECT EXISTING FIELD PIPING. ADDED FUTURE WITHDRAWAL LINE FROM LN2 DEWAR #3 & MV????? IN U-TUBE LNB-ESR-LN-U1. C. BUTLER 3/13/19	T. WILERATNE 13MAR19	C. PERRY 13MAR19

**OPEN REV C**  
3/13/19



- NOTES:
- EACH RELIEF VALVE IS REMOVABLE TO PERMIT INSTALLATION OF LN2 COLD TRAP AUTOMATIC FILLING STATION.
  - LOCATED BETWEEN MCB HX-9A AND SCM.
  - BOTH BAYONET CANS ARE ADJACENT TO EACH OTHER AND NEAR (SLIGHTLY WEST OF) THE OLD CHARCOAL ADSORBER.
  - BEHIND (SLIGHTLY SOUTH OF) FEL BAYONET CAN.

THIS DRAWING PARTIALLY REPLACES 71700-E-0018 REV C & 71700-D-0020 REV A

DOCUMENT CONTROL STAMP		DIM & TOL PER ASME Y14.5 UNLESS OTHERWISE SPECIFIED DIMENSIONS ARE IN INCHES TOLERANCES ARE: FRACTIONS DECIMAL ANGLES X + N/A . N/A XX + N/A XXX + N/A * N/A		TRACKING NO. N/A		APPROVALS		DATE	
MATERIAL N/A		THIRD ANGLE PROJECTION		DRAWN AMH		7/18/04		CHECKED J. D. WILSON JR.	
FINISH MACHINED SURFACES DEBURR & BREAK ALL SHARP EDGES		UNLESS OTHERWISE NOTED		APPROVED V. GANNI		5-1-06		APPROVED D. ARENIUS	
DO NOT SCALE DRAWING				SCALE N/A		SIZE D		DWG. NO. 71400-1000	
				SHEET 1		OF 1		REV C	

Thomas Jefferson National Accelerator Facility  
NEWPORT NEWS, VIRGINIA  
UNITED STATES DEPARTMENT OF ENERGY

**CHL LN2 DISTRIBUTION SYSTEM (LND) FLOW DIAGRAM**