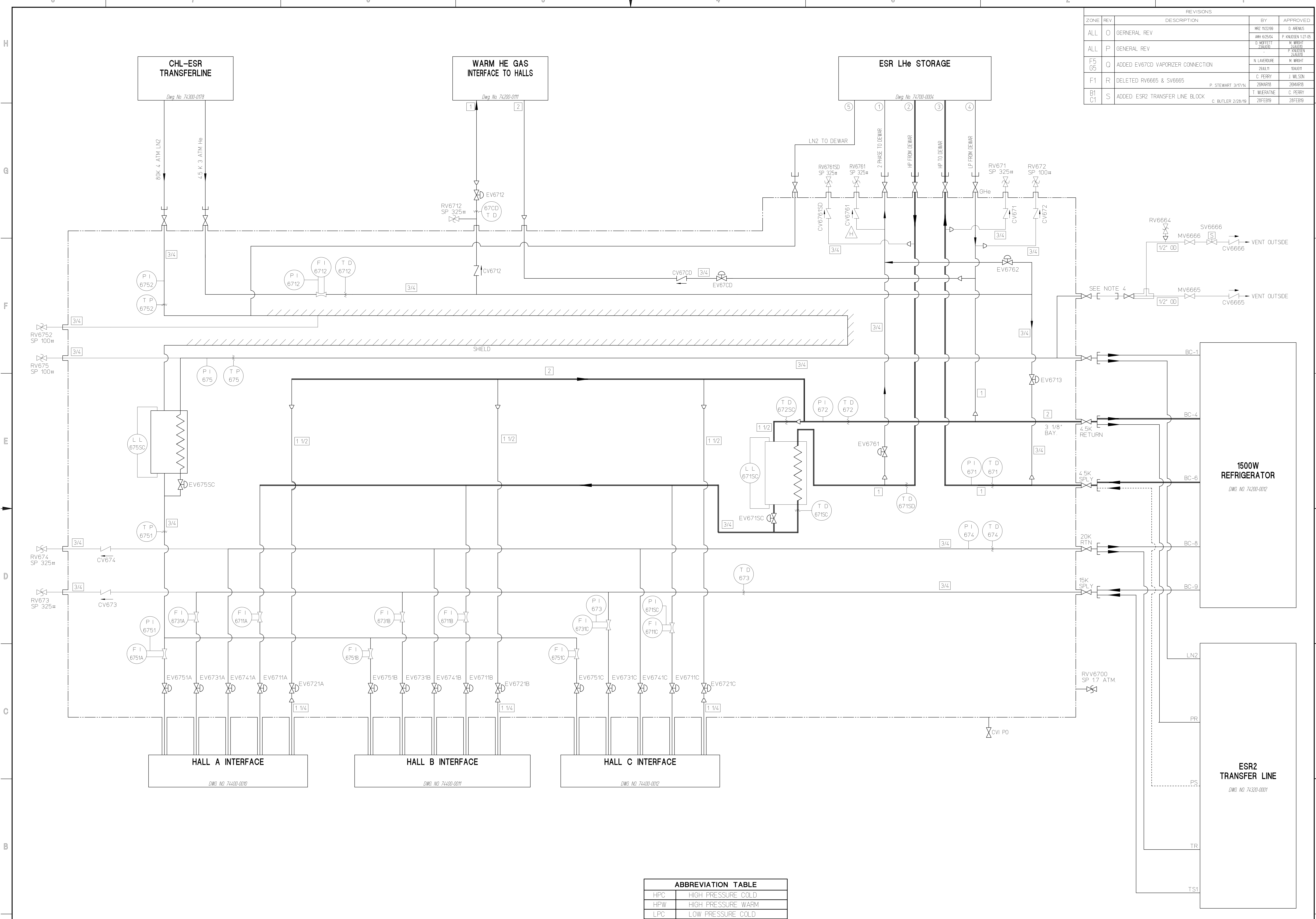


REVISIONS				
ZONE	REV	DESCRIPTION	BY	APPROVED
ALL	0	GENERAL REV	MR2 10/29/99	D ARENIS
ALL	P	GENERAL REV	AMN 6/26/04	P. KIMSEN 1-27-05
F5	05	ADDED EV67CD VAPORIZER CONNECTION	D. ROFFETT 2/28/05	M. WRIGHT 2/28/05 P. DAZEN 2/28/05
F1	R	DELETED RV6665 & SV6665	N. LAVERGNE 28/11	M. WRIGHT 28/11 J. WILSON 28/11
B1	C1	ADDED ESR2 TRANSFER LINE BLOCK	P. STEWART 3/17/14	ZEMARIS 28/11 ZEMARIS 28/11
	S		T. MIERATNE 2/28/19	C. PERRY 28/11 C. PERRY 28/11



- NOTES
- E REVISION WAS ORIGINAL RELEASED & SIGNED OFF DRAWING. N/C THRU REV. D WERE MONTHLY ISSUES FOR REVIEW PRIOR TO SIGN-OFF.
 - EV6721A/B/C ARE 1 1/2" VALVES PER 75600-0348 (Cv=15) ALL OTHER EV'S ARE PER 75600-E-0165 w/ Cv=3.0.
 - REFER TO DRAWING 74300-0178 FOR CONTINUATION OF ALTERNATE U-TUBE CONFIGURATION.
 - THIS LINE IS A LN2 SUPPLY TO FILL LN2 TRAPS AND TO VENT VALVE BOX LN2 SUB-COOLER DURING A COLD BOX TRIP.

ABBREVIATION TABLE	
HPC	HIGH PRESSURE COLD
HPW	HIGH PRESSURE WARM
LPC	LOW PRESSURE COLD
LPW	LOW PRESSURE WARM
MCB	MAIN COLD BOX
MCS	MAIN COMPRESSOR SYSTEM
PR1	PRIMARY RETURN 1
PS1	PRIMARY SUPPLY 1
TR	TARGET RETURN
TS	TARGET SUPPLY
TS1	TARGET SUPPLY 1
TS2	TARGET SUPPLY 2

OPEN REV S
4/19/19

<small>DIM & TOL PER ANSI Y14.5 UNLESS OTHERWISE SPECIFIED DIMENSIONS ARE IN INCHES TOLERANCES ARE DECIMAL #/16" XX + N/A # N/A XXX + N/A</small>	<small>CADD I.D. NO. /wbs/74400/0013</small>	<small>GEBAF The Continuous Electron Beam Accelerator Facility 13700 POINTS VICTORIA UNITED STATES DEPARTMENT OF ENERGY</small>
<small>MATERIAL</small>	<small>APPROVALS</small>	<small>DATE</small>
<small>FINISH</small>	<small>CHECKED</small>	<small>DATE</small>
<small>DEBURR & BREAK ALL SHARP EDGES</small>	<small>APPROVED</small>	<small>DATE</small>
<small>DO NOT SCALE DRAWING</small>	<small>APPROVED</small>	<small>DATE</small>

SIZE: DWG NO. 74400-0013 REV S
 USED ON ASSY NO. 74200-0101 SHEET 1 OF 1