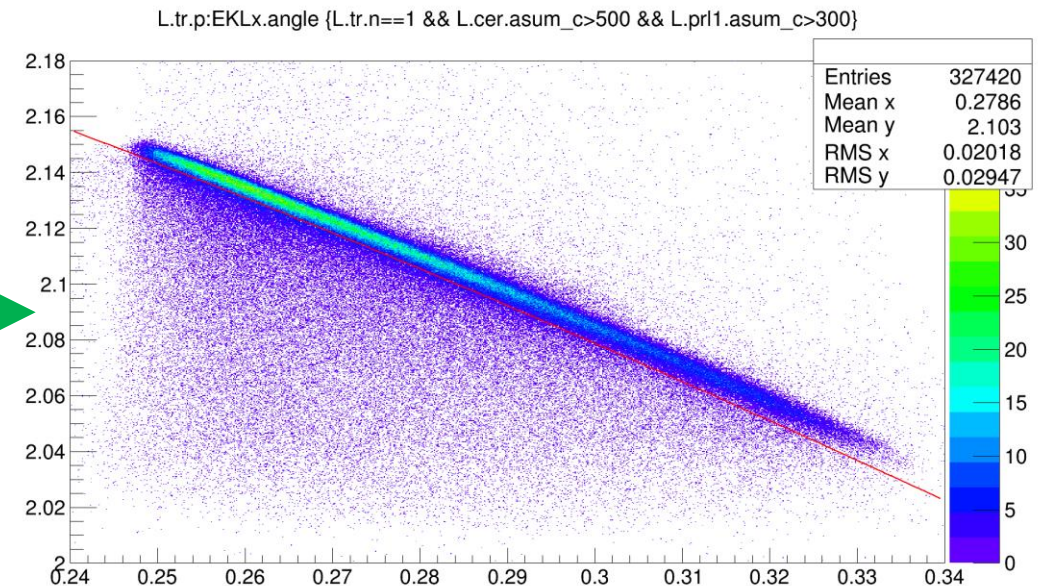
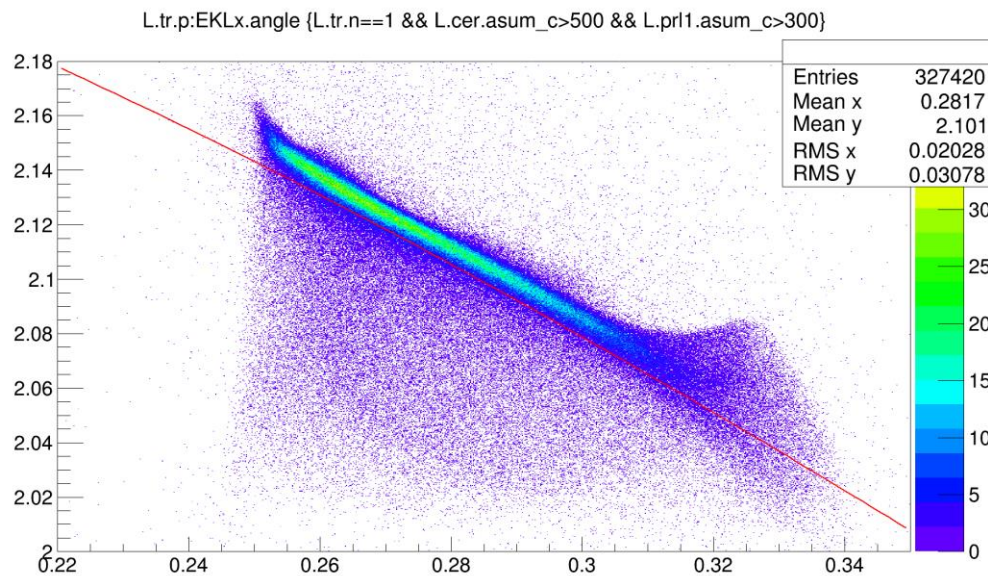


LHRS Optics summary

Spring 2016

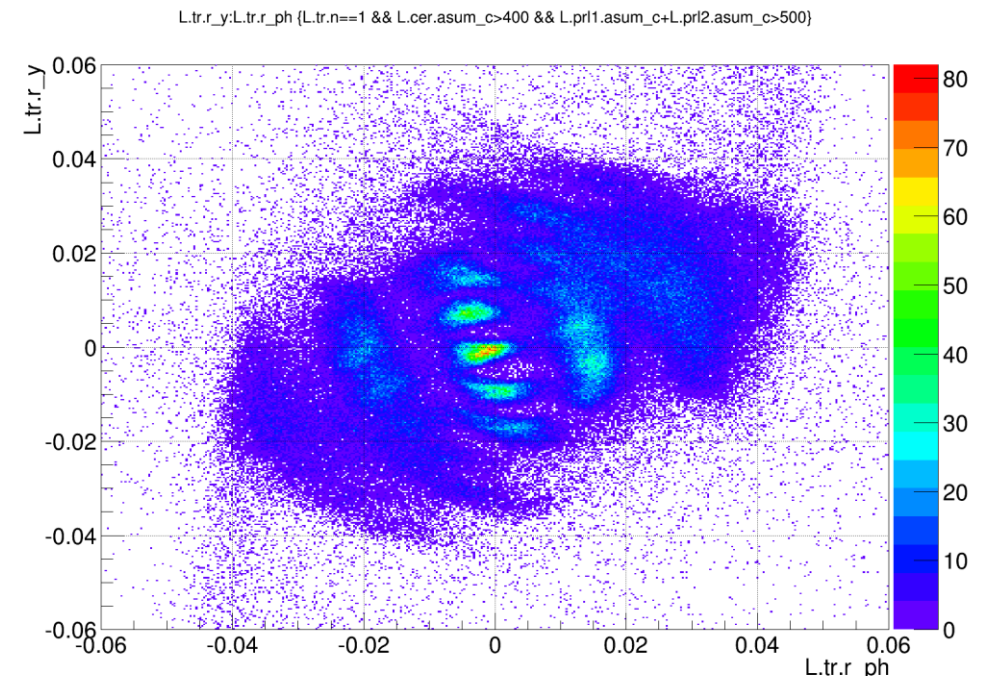
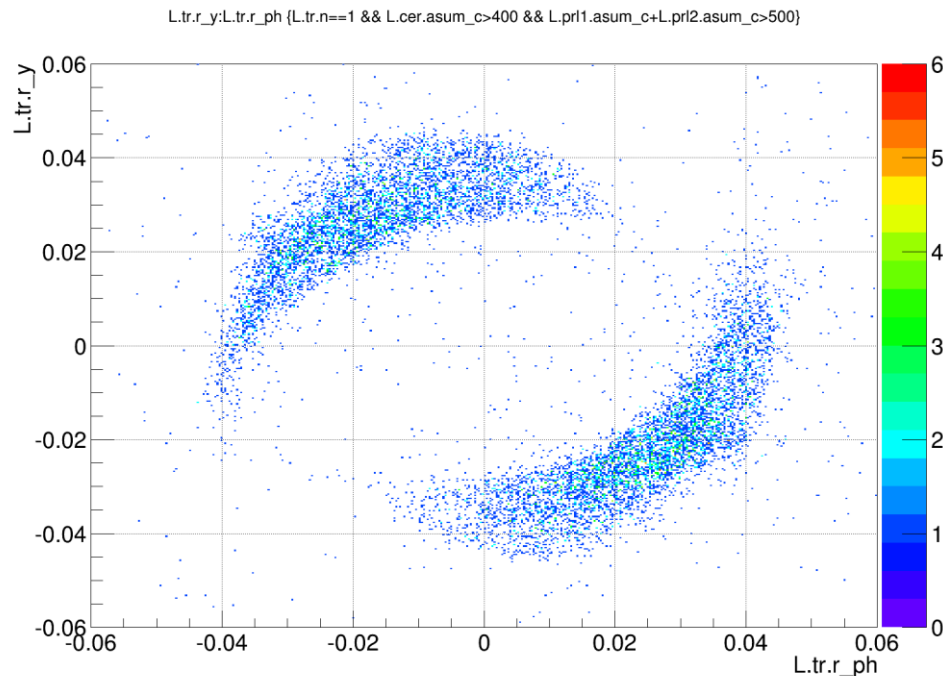
- Issue 1 : momentum calibration with order 4 (complete) matrix not working.

→ Calibrated only 3 main momentum coefficients (dependence in x_{fp} , x_{fp}^2 and $x_{fp} * \theta_{fp}$), other coefficients left untouched. ($x_{fp} * \theta_{fp}$ was dominating)



Spring 2016

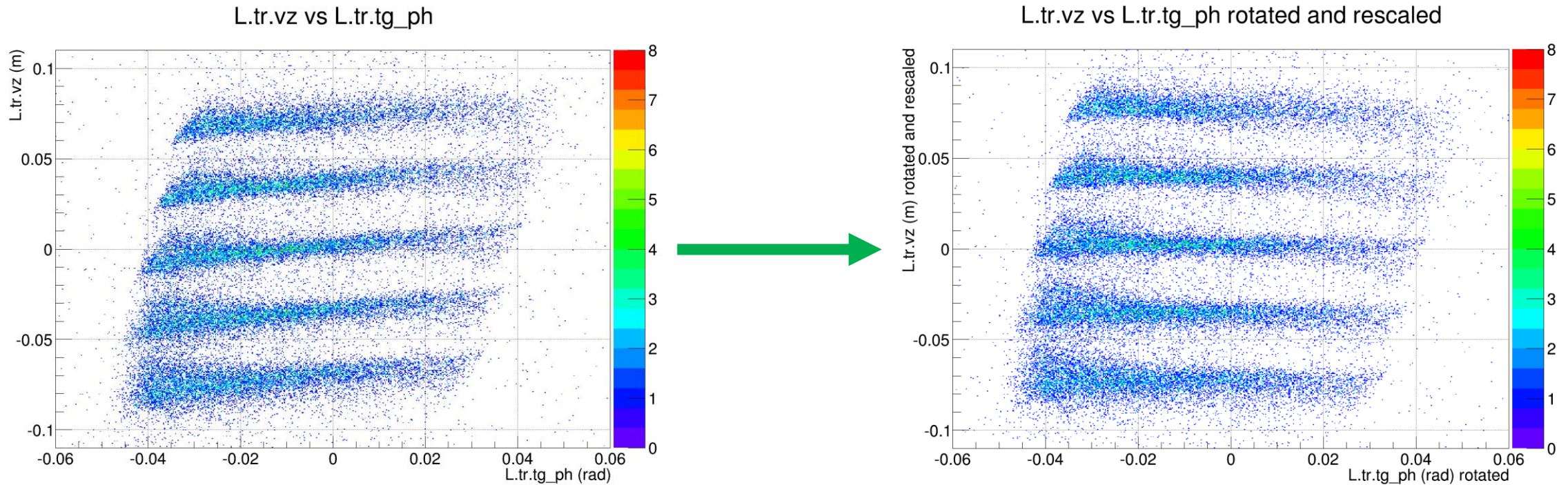
- Issue 2 : Calibration runs taken with LHRS at small angle, focal plan not fully calibrated. Calibration on the edges of the target was poor (and target length was too short).
→ Calibrated vertex and phi matrix coefficients up to order 2, set higher coefficients to 0.



Spring 2016

- Issue 3 : remaining dependence vertex-phi + reconstructed target length still a little bit too short.

→ Rotation vertex-phi plan + vertex rescaling (but optics matrix not changed)



Fall 2016

- Issue : Q1 saturation

No solution yet, still using Yang Wang's early optic matrix (calibrated before saturation was discovered).

