

CLAS Chair Nominee Statement

Kyungseon JOO

University of Connecticut

June, 2017

A few words on my background

- Associated with CLAS since 1997 (20 yrs already?)
 - Postdoc at the U. of Virginia and Jefferson Lab (1997 -2002)
 - Joined U. of Connecticut as Faculty (2002- Present)
- **Other positions** related Jefferson Lab
 - Program Director at NSF (2010 – 2012)
 - Program Manager at DOE (2013 – 2015)
 - Fulbright Scholar at IPN-Orsay (2015 – 2016)

Postdoc at
U. of Virginia and
Jefferson Lab

Program Director
at NSF

Professor at U. of
Connecticut

1997

2002

2010

2013

2015

PhD (MIT)

JLab-Bridge
Professor at U. of
Connecticut

Program Manager
at DOE

UConn Group Building

- UConn group has grown very strong since 2002:
 - Former postdocs: [Maurizio Ungaro \(JLab\)](#), Alex Kubarovsky, Luca Colaneri.
 - Former PhD students (graduated 7 PhDs): [Nathan Harrison \(2015\)](#), Erin Seder (2013), [Taisiya Mineeva \(2013\)](#), Ilkyoung Shin (2013), Wes Gohn (2012), [Nikolay Markov \(2012\)](#), Bo Zhao (2008).
- Publications:
 - A. Kim, **K. Joo**, et al. (CLAS Collaboration); Phys. Lett. B755 (2016) 64-69.
 - E. Seder, **K. Joo**, et al. (CLAS Collaboration); Phys. Rev. Lett. 114 (2015) no.3, 032001.
 - W. Gohn, **K. Joo**, et al. (CLAS Collaboration); Phys. Rev. D89 (2014) no.7, 072011.
 - M. Ungaro, **K. Joo**, et al. (CLAS Collaboration); Phys. Rev. Lett. 97 (2006) 112003.
 - **K. Joo**, et al. (CLAS Collaboration); Phys. Rev. C72 (2005) 058202.
 - **K. Joo**, et al. (CLAS Collaboration); Phys. Rev. C70 (2004) 042201.
 - **K. Joo**, et al. (CLAS Collaboration); Phys. Rev. C68 (2003) 032201.
 - A. Afanasev, I. Akushevich, V. Burkert, **K. Joo**, Phys. Rev. D66, (2002) 074004.
 - **K. Joo**, et al. (CLAS Collaboration); Phys. Rev. Lett. 88 (2002) 122001.
 - 4 papers are currently under collaboration review.

Current UConn Group (PI: K. Joo)

- Postdocs:



N. Markov



A. Kim



N. Sato

- PhD Students:



T. O'Connell D. Riser



F. Cao



B. Clary



K. Wei

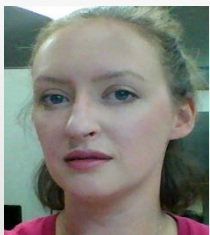


K. Tezgin



P. Hornung

- Undergraduates:



C. Ploen



S. Makelon.

A few words on UConn Group with CLAS12

- **CLAS12 detector development**

- **GEMC** initiated/developed by Maurizio Ungaro (JLab)
- **High Threshold Cherenkov Counter (HTCC)** led by Nikolay Markov (postdoc)
- **Trigger Studies** led by Nikolay Markov
- **Ring Imaging Cherenkov detector (RICH)** led by Andrey Kim (post doc)
- **HD-ice transversely polarized target** led by Kevin Wei (graduate student), Thomas O'Connell (graduate student)

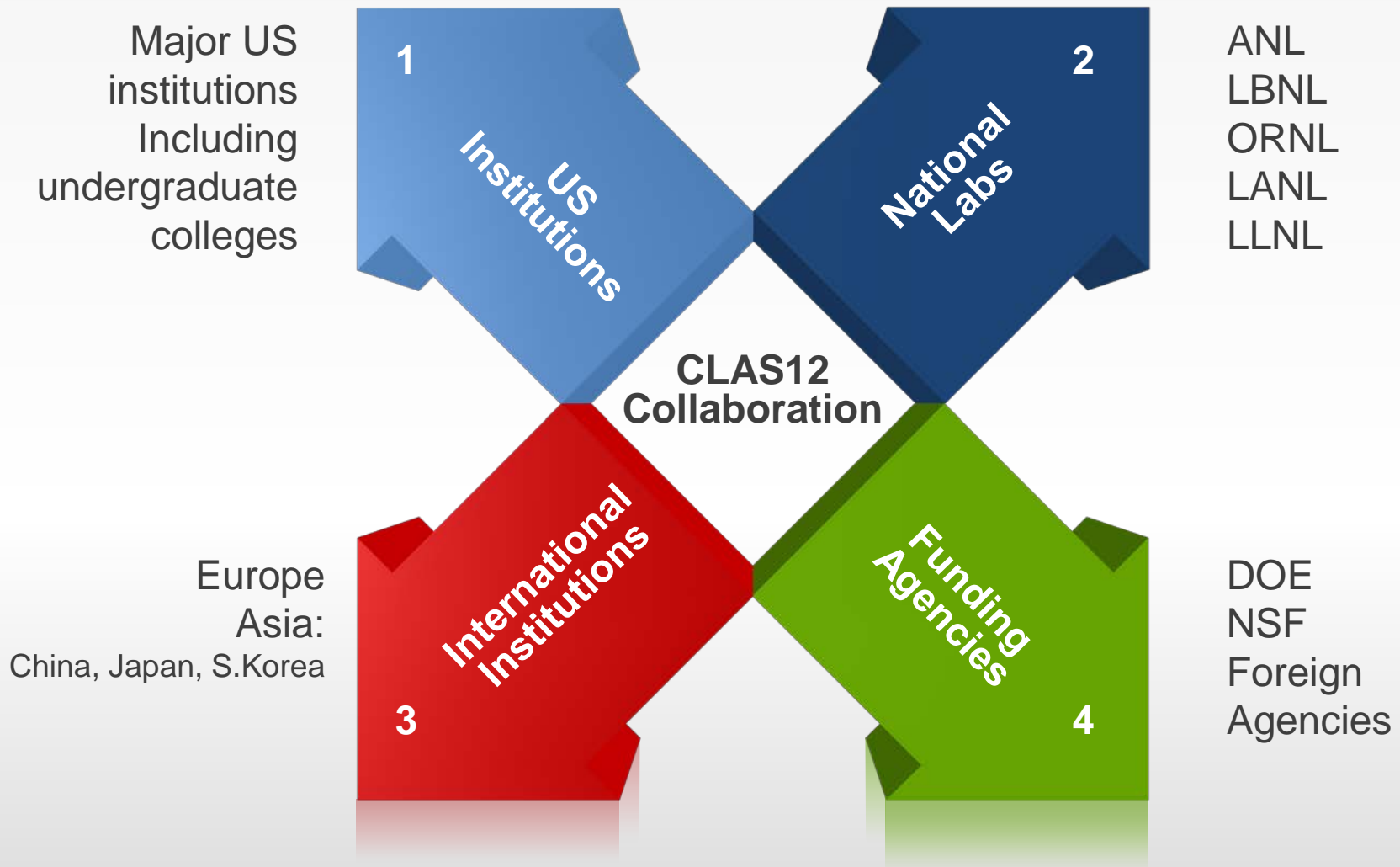
- **CLAS12 approved experiments**

Co-spokespersonship of **7 approved CLAS12 experiments** on Generalized Parton Distributions (GPDs), Transverse Momentum Distributions (TMDs), N^* physics, and hadronization.

Should I be elected as chair, my focus will be on

- Preparing for the first physics experiments with CLAS12 and disseminating first results for publication as soon as possible.
 - Streamlined data analysis, review process for expedited publications
- Extending the CLAS12 scientific reach
 - Luminosity upgrade, etc.
- Scientific priorities and scheduling
- Producing continued output of excellent science from 6 GeV era data

- Enhancing the visibility of the CLAS Collaboration, and expanding the reach of the collaboration



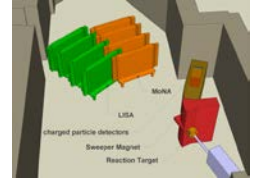
Undergraduate research:

Large-area multi-Institutional Scintillator Array (LISA)



MoNA - LISA

MRI-Consortium: Development of a Neutron Detector Array by Undergraduate Research Students for Studies of Exotic Nuclei.



- Augustana College, IL
- Central Michigan University, MI
- Concordia College, MN
- Florida State University, FL
- Gettysburg College, PA
- Hope College, MI
- Indiana University at South Bend, IN
- Marquette University, WI
- Michigan State University, MI
- Ohio Wesleyan University, OH
- Rhodes College, TN
- Wabash College, IN
- Western Michigan University, MI
- Westmont College, CA

61 UG students (2006-2010)
21 CEU Posters + 11 other UG presentations

New members:

Sharon Stephenson



Robert Kaye



Deseree Meyer



National Science Foundation
Michigan State University

Should I be elected as chair,

I will be 100% dedicated to this job for next two years to maximize a full potential of our CLAS12.

