

ACQUIRING JLAB ACCOUNT

Cameron Clarke, Raiqa Rasool

Jefferson Lab

ACQUIRING AN ACCOUNT

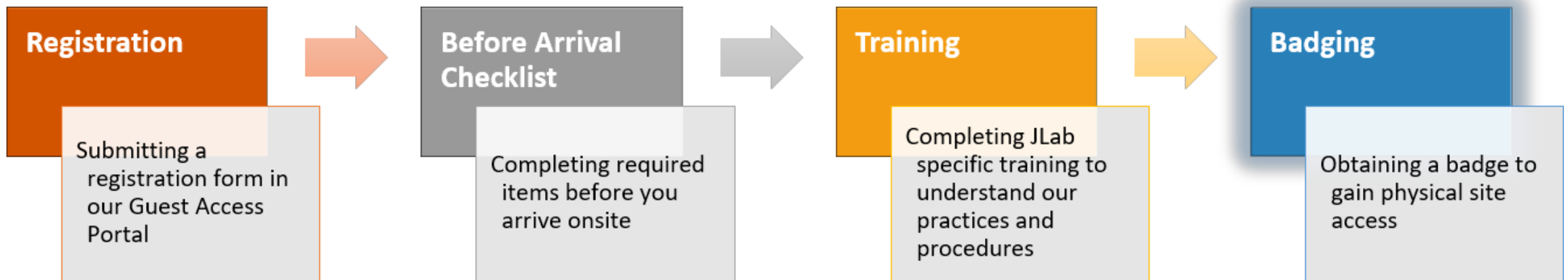
When starting at JLab several administrative steps must be taken to gain access to critical lab resources

- Get a site access name badge
- Get and verify your JLab computer account
- Request access to Microsoft Office (JLab staff and interns only), JLab ifarm, ifarm slurm, VDI, and group file access
- Necessary training (cybersecurity, oxygen deprivation, radiation training, etc.)

ACQUIRING AN ACCOUNT

Get a badge:

- Register – several weeks before visiting, pick a user account you want to have as your permanent email and login
- Checklist – fill out necessary information
- Training – finish basic safety and computer training, advanced training can be done after joining
- Badging – visit the badging office on your first day to get access to JLab buildings



<https://www.jlab.org/facilities/badgingoffice>

For student interns:

- Mentor needs to finish MGT 202 training
- If outside of formal internship programs (specifically Undergraduate Physics Researchship – UPR students):
 - Mentor needs to formally request site access, a badge, and a computer account for the student

ACQUIRING AN ACCOUNT

- Visit computer center helpdesk on 2nd floor of CEBAF Center F wing to receive your computer account
 - Ask for Microsoft Authenticator MFA setup for Office 365 access if you are a JLab intern or staff (not available for all users)
 - Ask your [Computing Coordinator](#) to be added to relevant computer account user group to access ifarm
 - Ask for invitation to MobilePASS SAS MFA for general `login.jlab.org` access
 - Ask for VDI RHEL CUE access (Linux web-based virtual machine access)
 - Avoid using "SmartCard" USB access if possible (it is required to access personal JLab-managed Windows OS computers)
 - Ask for Jupyterhub access if you want it

Scientific Computing username [Getting Started](#) [Support](#) [Staff Members](#)

Jlab Scientific Computing

Welcome to the Jefferson Lab Scientific computing home page. [New users start here.](#)

Jun-17-24 Scicomp June Maintenance day Tuesday, 25th 2024 /cache, /volatile and /work outages (partial) During the upcoming maintenance day, Tuesday, June 25th, we intend to update the software on (and reboot)

- scigw20a, the primary NFS gateway for the Farm's Lustre (/cache and /volatile) filesystem.
- scifs2102, the host of /work/hall[abc], clas*, cebaf24gev, indra-astra, and proposals; and scifs2104, the host of /work/eic (eic3).

We expect half-an-hour of downtime for each, sometime during the workday on Tuesday.

Feb-27-24 Software Environment and Filesystem Changes The use of /apps is deprecated and is not available on farm AlmaLinux 9 machines. CVMFS is now used to distribute software. It is rooted under OASIS and can be used with [modulefiles](#) as before. For questions about software package availability, please submit a ServiceNow incident. For hall-specific software distribution questions, contact your computing coordinator. The legacy /site area has been removed. The path to Jasmine (tape) and cache tools is changed from /site/bin to /usr/local/bin. The CUE /u/scratch area has also been removed.

Feb-26-24 Farm Upgrade Schedule and Worker Node Selection The farm is being upgraded in a series of steps. Between now and June, the farm composition with change from majority CentOS 7 to predominantly AlmaLinux 9. At the time of this writing, CentOS 7 is the default. This default will change at a later step in the conversion process. Users may currently select which nodes run their jobs using slurm features/constraints. [This article](#) provides details on feature-based node selection. SWIF can pass features through to Slurm. See the SWIF introduction and [SWIF command line](#) reference for details. The interactive (ifarm) nodes currently run CentOS 7. A new machine, ifarm9.jlab.org is available for AlmaLinux 9 use now. Two new ifarm machines that will run AlmaLinux 9 are on order. They will replace the existing ifarm machines and include more per-core memory and temporary disk space.

Slurm Job (Outstanding jobs)

Running	Pending	Held	Other
1,778	4,061	1	4

Slurm Job (past 24 Hrs finished jobs)

Success	Failed	Cancelled	Timedout	OverMemory	NodeFail
37,137	2,179	319	733	201	29

Cluster Node Status

Node	Running	Pending	Held	Other
farm18	~65	~5	~0	~0
farm19	~85	~15	~0	~0
farm23	~25	~5	~0	~0
sciml	~5	~0	~0	~0

Datamover Status

Node	Running	Pending	Held	Other
LTO7	~4	~0	~0	~0
LTO8	~20	~0	~0	~0

File System Status

File System	Running	Pending	Held	Other
lustre	~4000	~0	~0	~0
cache	~3000	~0	~0	~0
volatile	~1000	~0	~0	~0
work	~500	~0	~0	~0

Job Info Last 24 Hrs

Line chart showing job counts over time for various categories.

<https://scicomp.jlab.org/>

ACQUIRING AN ACCOUNT

- Verify account access
 - Go to www.jlab.org, log in to your user account, visit the insight page, and check your skills list

Jefferson Lab

Welcome Cameron Clarke | SIGN OUT

HOME INSIGHT MY LINKS Search

U.S. DEPARTMENT OF ENERGY

Menu

LMS - PERSON SRL SEARCH

Person Search

Required Skills for Cameron Clarke (cameronc) as of 6/19/2024 11:02 pm

Build SRL in JTA

Show 10 entries Filter By:

Required Competencies (skill sets)

Competency	Status
Radiological Worker I	COMPLETE

Showing 1 to 1 of 1 entries

Show 10 entries Filter By:

Required Individual Skills (not part of a competency)

Skill	Code	Category	Last Acquired	Course Taken	Months Since	Expiration	Status
Timekeeping Principles	ADM001	ADMINISTRATIVE/QUALITY	3/5/2024	Timekeeping Principles	3	N/A	Current
Salaried Exempt Mechanics	ADM004	ADMINISTRATIVE/QUALITY	3/5/2024	Timekeeping Mechanics	3	N/A	Current

<https://misportal.jlab.org/training/people/srl>

Jefferson Lab

U.S. DEPARTMENT OF ENERGY

JLab Web Single Sign-On

Enter your JLab username and password below to login to the Single Sign-On System. With this system, JLab users can login once to access numerous web applications.

Username

Password

Prompt me to re-enter my password when using new services

Login

Click [here](#) to use a multi-factor authentication method

PRIVACY AND SECURITY NOTICE
JLAB STATUS

JEFFERSON LAB
HELPDESK@JLAB.ORG

Site Group Dashboard

Jefferson Lab

Welcome CAMERON CLARKE | LOGOUT

HOME A-Z INDEX MY LINKS Search

U.S. DEPARTMENT OF ENERGY

HOME FRONT PAGE SCIENCE ES&H NEWS BUSINESS INTELLIGENCE POLICIES AND PROCEDURES

MY BOOKMARKS

- Computer Center Helpdesk
- Employee Self Service (ESS)
- Events At-A-Glance
- Human Resources (HR)
- LMS SRL
- On the Menu
- Timesheet

PERSONAL INFORMATION

0 items awaiting approval

EVENTS

JLAB Calendar of Events

- NSTAR 2024 Conference (York, UK) (06/17 - 06/21)
- Workshop on Sustainable Software Infrastructure for Advanced Nuclear Physics Computing (06/20 - 06/22)
- DOE FES Program Manager Visit (06/20 - 06/20)
- Accelerator Seminar - Alimohammed Kachwala (06/20 - 06/20)
- Theory Seminar - Dennis Bollweg (06/24 - 06/24)

NEWS FROM AROUND THE LAB

CEBAF ACCESS STATUS

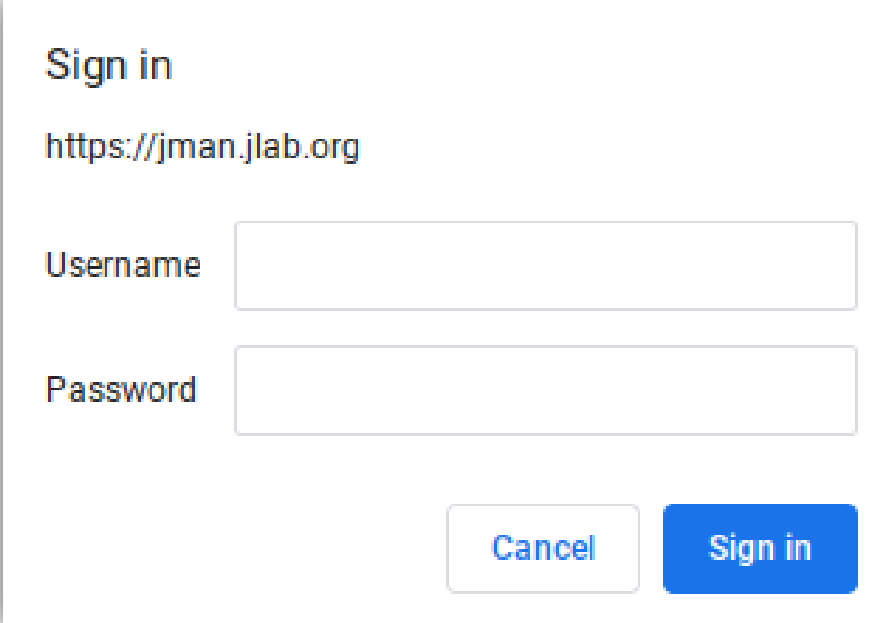
LEGEND

- Beam Permit
- Controlled Access
- Power Permit
- Restricted Access
- Sleep

<https://misportal.jlab.org/portal/insight/frontPage>

ACQUIRING AN ACCOUNT

- Verify account access
 - Go to www.jlab.org, log in to your user account, visit the insight page, and check your skills list
 - Change your temporary password, using the website's password management system or command line `passwd` command



Sign in

<https://jman.jlab.org>

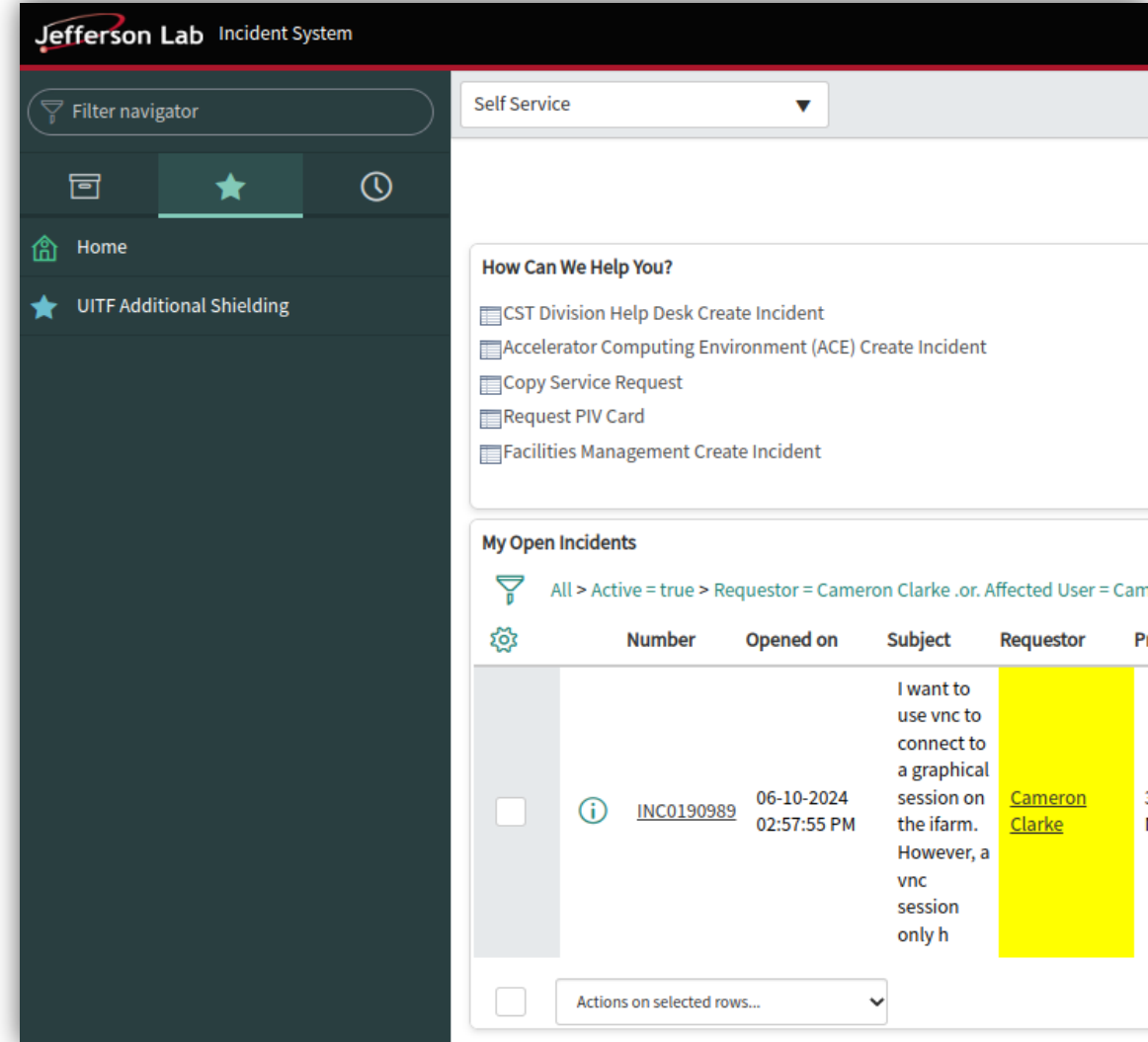
Username

Password

<https://jman.jlab.org/jpasswd>

ACQUIRING AN ACCOUNT

- Verify account access
 - Go to www.jlab.org, log in to your user account, visit the insight page, and check your skills list
 - Change your temporary password, using the website's password management system or command line `passwd` command
- If you need help:
 - For any of these steps, if you have any trouble
 - Visiting the help desk in person or calling over the phone (757) 269-7155 works best
 - Emailing helpdesk@jlab.org automatically files a support ticket
 - Or you can file a helpdesk ticket manually at <https://jlab.servicenowservices.com/navpage.do>

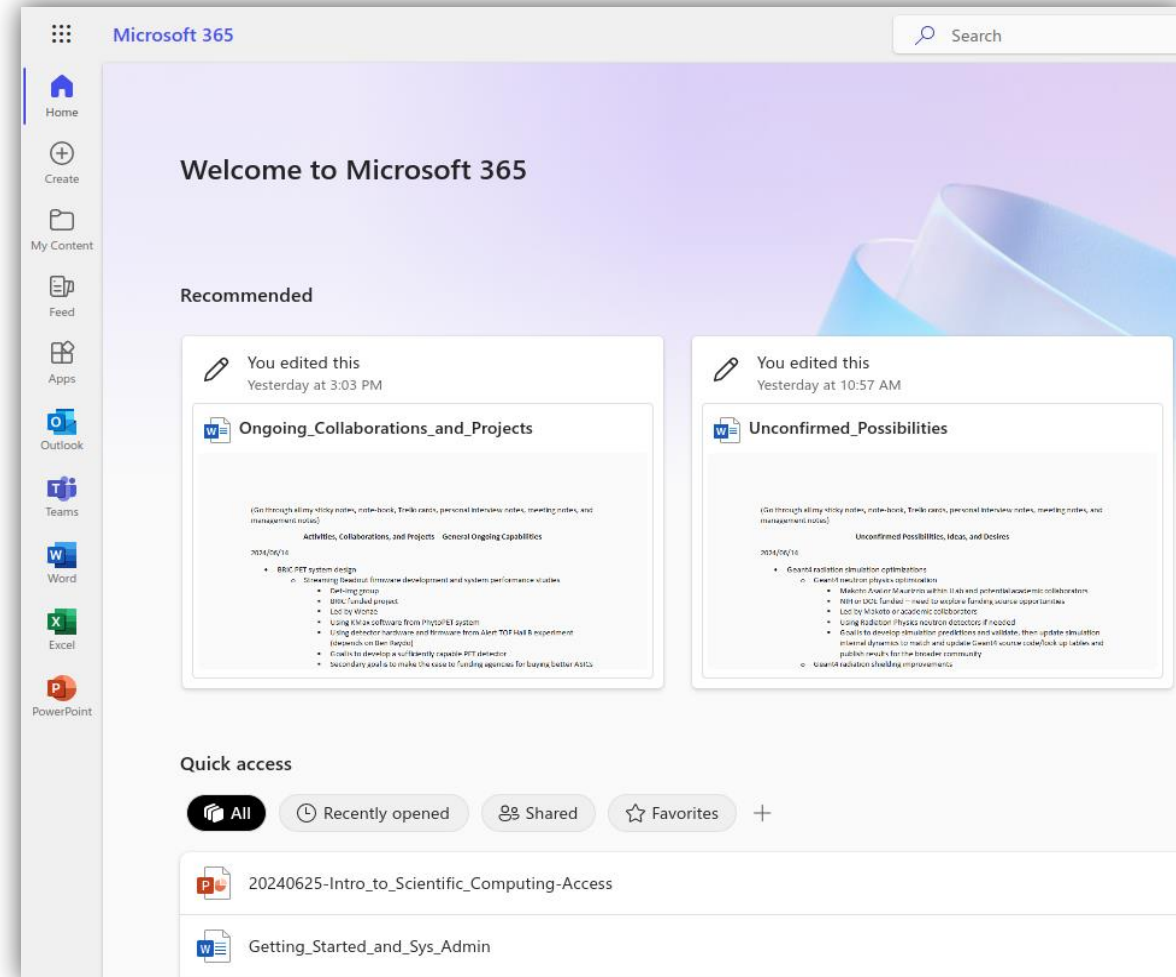


The screenshot displays the 'Jefferson Lab Incident System' interface. The top navigation bar includes a 'Filter navigator' and a 'Self Service' dropdown menu. Below the navigation bar, there are several menu items: 'Home', 'UITF Additional Shielding', and a star icon. The main content area is divided into two sections. The first section, titled 'How Can We Help You?', lists several service requests: 'CST Division Help Desk Create Incident', 'Accelerator Computing Environment (ACE) Create Incident', 'Copy Service Request', 'Request PIV Card', and 'Facilities Management Create Incident'. The second section, titled 'My Open Incidents', shows a table of open incidents. The table has columns for 'Number', 'Opened on', 'Subject', and 'Requestor'. One incident is visible with the number 'INC0190989', opened on '06-10-2024 02:57:55 PM', and the subject 'I want to use vnc to connect to a graphical session on the ifarm. However, a vnc session only h'. The requestor is 'Cameron Clarke'. The table also includes a filter bar at the top: 'All > Active = true > Requestor = Cameron Clarke .or. Affected User = Cam' and a settings icon. At the bottom of the table, there is a checkbox and a dropdown menu labeled 'Actions on selected rows...'. The 'Requestor' column for the incident is highlighted in yellow.

<https://jlab.servicenowservices.com/navpage.do>

ACQUIRING AN ACCOUNT

- Verify account access
 - Go to www.jlab.org, log in to your user account, visit the insight page, and check your skills list
 - Change your temporary password, using the website's password management system or command line `passwd` command
 - If you need help: helpdesk@jlab.org tickets
 - Set up Microsoft Authenticator (MFA) for Office 365 access (only if you are staff or an intern)
 - O365 access type (full vs email-only) is determined by your supervisor or the person who requested your computing account setup
 - **Full Office 365 access:** provides access to all Office apps (Teams, Outlook, PowerPoint, etc.). Verify by logging into www.office.com and checking access to all Office apps.
 - **Email-only access:** provides Outlook email access only. Verify by logging into outlook.office365.com

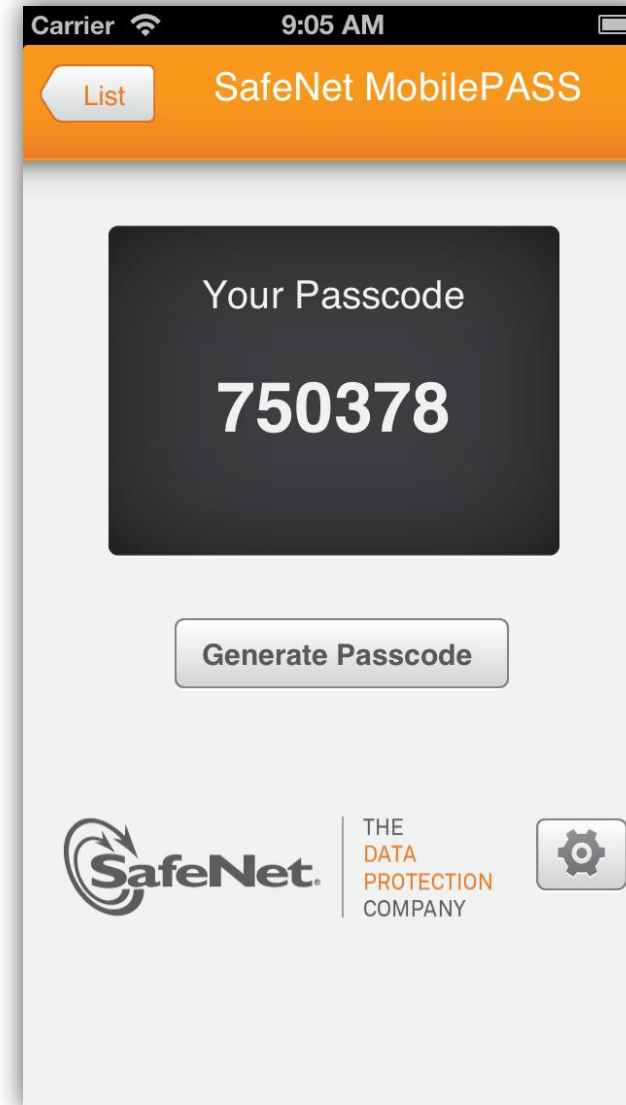


ACQUIRING AN ACCOUNT

- Verify account access
 - Go to www.jlab.org, log in to your user account, visit the insight page, and check your skills list
 - Change your temporary password, using the website's password management system or command line `passwd` command
 - If you need help: helpdesk@jlab.org tickets
 - Setup and verify Office 365 access
 - Set up and verify login.jlab.org access with the SAS MobilePass multifactor app invitation

To test login.jlab.org access:

- Ask the helpdesk staff to test your login.jlab.org access from a terminal at the helpdesk to ensure everything is working properly before the computing workshop.



MobilePass Phone App

Or – USB Code Generator
(not a smart card, just a convenient dongle that you can press to get a code)

Uses SafeNet
Authentication Service
(SAS)

ACQUIRING AN ACCOUNT

- Verify account access
 - Go to www.jlab.org, log in to your user account, visit the insight page, and check your skills list
 - Change your temporary password, using the website's password management system or command line `passwd` command
 - If you need help: helpdesk@jlab.org tickets
 - Setup and verify Office 365 access
 - Set up and verify login.jlab.org access with the SAS MobilePass multifactor app invitation
 - Set up and verify interactive farm (ifarm) slurm and batch access (optional, can wait until later)
 - ifarm access requires the Hall/Group Computing Coordinator to assign user to appropriate group(s)
 - https://jlab.servicenowservices.com/kb?id=kb_article_view&sysparm_article=KB0014686

To test ifarm.jlab.org access:

- After being added to the appropriate group by your Hall/Group Computing Coordinator, ask the helpdesk staff to test your ifarm.jlab.org access by terminal on their workstation to confirm access before the computing workshop.

ACQUIRING AN ACCOUNT

- Verify account access
 - Go to www.jlab.org, log in to your user account, visit the insight page, and check your skills list
 - Change your temporary password, using the website's password management system or command line `passwd` command
 - If you need help: helpdesk@jlab.org tickets
 - Setup and verify Office 365 access
 - Set up and verify login.jlab.org access with the SAS MobilePass multifactor app invitation
 - Set up and verify interactive farm (ifarm) slurm and batch access (optional, can wait until later)
 - ifarm access requires the Hall/Group Computing Coordinator to assign user to appropriate group(s)
 - https://jlab.servicenowservices.com/kb?id=kb_article_view&sysparm_article=KB0014686

To test ifarm.jlab.org access:

- After being added to the appropriate group by your Hall/Group Computing Coordinator, ask the helpdesk staff to test your ifarm.jlab.org access by terminal on their workstation to confirm access before the computing workshop.

Interactive farm (ifarm) slurm access pre-requisites:

- Contact your [Compute Coordinator](#) so they can add you to the appropriate unix groups and slurm accounts
 - To verify complete farm batch job access
 - ssh login.jlab.org
 - ssh ifarm
 - To enable submitting farm jobs you must run
 - ``/site/bin/jcert -create`` on ifarm
- From https://jlab.servicenowservices.com/scicomp?id=kb_article_view&sysparm_article=KB0014746
- To test ability to submit jobs, you may execute:
 - ifarm% `srun --cpus-per-task=1 --pty /bin/bash`
 - bash-4.2\$ `echo "This is running on host `hostname`"`
- From https://scicomp.jlab.org/docs/farm_slurm_batch_interactive_jobs

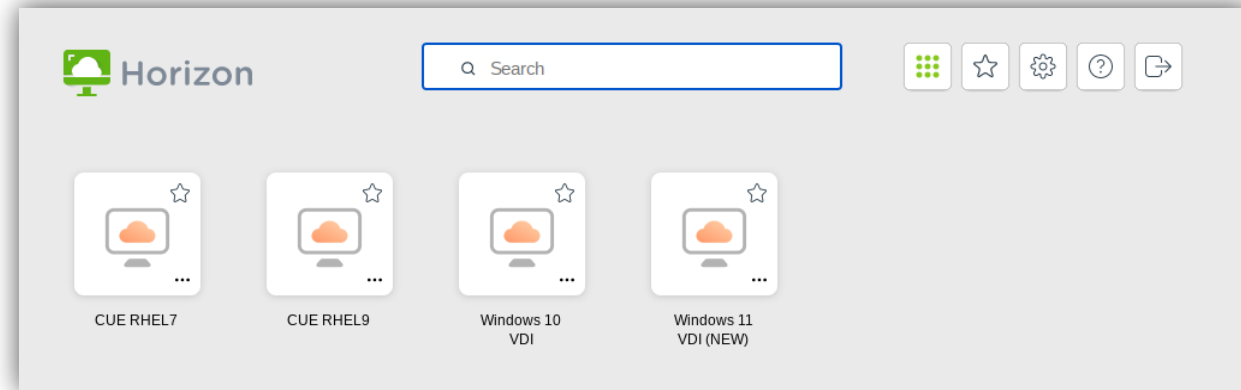
ACQUIRING AN ACCOUNT

- Verify account access
 - Go to www.jlab.org, log in to your user account, visit the insight page, and check your skills list
 - Change your temporary password, using the website's password management system or command line `passwd` command
 - If you need help: helpdesk@jlab.org tickets
 - Setup and verify Office 365 access
 - Set up and verify login.jlab.org access with the SAS MobilePass multifactor app invitation
 - Set up and verify interactive farm (ifarm) slurm and batch access (optional, can wait until later)
 - Verify VDI access

JLab VDI Support Article:

https://jlab.servicenowservices.com/sp?id=kb_article_view&sysparm_article=KB0011328

Log in to <https://vdi.jlab.org> (download the app or use the easier html web-version) using your common user environment (CUE) username and password keeping **CNIADS*** as the domain



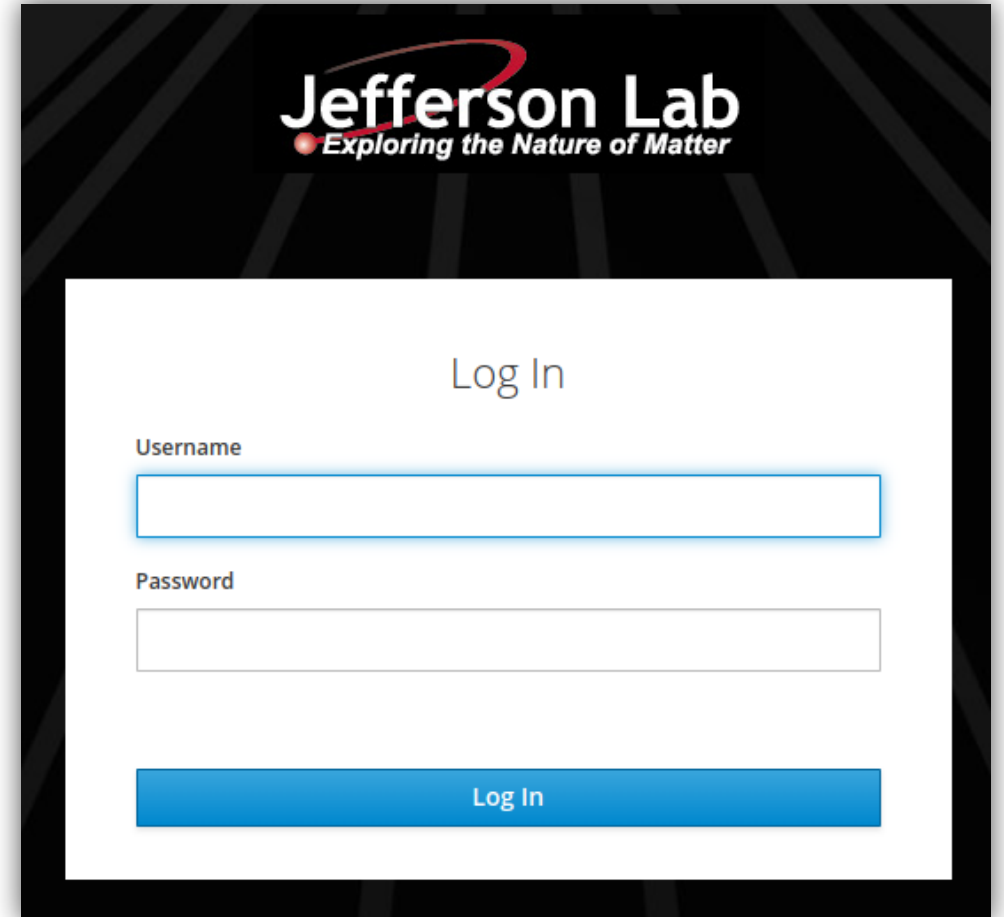
Once you get to this screen – select CUE RHEL9

When prompted, log in to RHEL9 system welcome screen using your MobilePASS SAS personal PIN plus 6 digit MFA code as the password

(a SmartCard is required for Windows Systems – avoid!)

ACQUIRING AN ACCOUNT

- Verify account access
 - Go to www.jlab.org, log in to your user account, visit the insight page, and check your skills list
 - Change your temporary password, using the website's password management system or command line `passwd` command
 - If you need help: helpdesk@jlab.org tickets
 - Setup and verify Office 365 access
 - Set up and verify login.jlab.org access with the SAS MobilePass multifactor app invitation
 - Set up and verify interactive farm (ifarm) slurm and batch access (optional, can wait until later)
 - Verify VDI access
 - Set up Microsoft Authenticator (MFA) for JupyterHub and verify the access



Log in to <https://jupyterhub.jlab.org> – first using your common user environment (CUE) password – second using your Microsoft Authenticator OTP code